

**Rollei**

# CarDVR-300



**User Guide**  
in English

[www.rollei.com](http://www.rollei.com)

## **Contents (GPS)**

<b>About this Guide</b> .....	4
<b>WEEE Notice</b> .....	4
<b>Battery Warning</b> .....	4
<b>Notes on Installation</b> .....	5
<b>Caution</b> .....	6
<b>1 Introduction</b> .....	7
1.1 Features .....	7
1.2 Package Contents .....	7
1.3 Product Overview .....	8
<b>2 Getting Started</b> .....	9
2.1 Inserting the Memory Card .....	9
2.2 Installing in Vehicles .....	10
2.2.1 Mount to Windshield .....	10
2.2.2 Adjust the Device Position .....	11
2.3 Connecting to Power .....	12
2.4 Powering the Device On / Off .....	14
2.4.1 Auto Power On/Off .....	14
2.4.2 Manual Power On/Off .....	14
2.5 Initial Settings .....	15
2.5.1 Set the Date and Time .....	15

<b>3 Using the Car Recorder</b> .....	16
3.1 Recording Videos .....	16
3.1.1 Record Videos while Driving .....	16
3.1.2 Parking Mode .....	17
3.1.3 Emergency Recording .....	18
3.1.4 The Recording Screen .....	19
3.2 Playback Videos and Photos .....	20
3.2.1 The Playback Screen .....	20
3.2.2 Deleting Files .....	21
<b>4 Adjusting the Settings</b> .....	22
4.1 Using the Menu .....	22
4.2 Menu Tree .....	23
<b>5 Installing the Software</b> .....	26
<b>6 SuperCar</b> .....	27
<b>7 Specifications</b> .....	28
<b>8 CE Conformity</b> .....	29

## About this Guide

The content in this document is for information purpose and is subject to change without prior notice. We made every effort to ensure that this User Guide is accurate and complete. However, no liability is assumed for any errors and omissions that may have occurred. The manufacturer reserves the right to change the technical specifications without prior notice.

## WEEE Notice



### Disposal of Waste Electrical and Electronic Equipment and/or Battery by users in private households in the European Union.

This symbol on the product or on the packaging indicates that this cannot be disposed of as a household waste. You must dispose of your waste equipment and/or battery by handing it over to the applicable take-back scheme for the recycling of electrical and electronic equipment and/or battery. For more information about recycling of

this equipment and/or battery, please contact your city office, the shop where you purchased the equipment or your household waste disposal service. The recycling of materials will help to conserve natural resources and ensure that it is recycled in a manner that protects human health and environment.

## Battery Warning

- Never dismantle, crush, or pierce the battery, or allow the battery to short-circuit. Do not expose battery being placed in high temperature environment, if battery leaks or bulges, stop continue to use.
- Always charge using the system. Risk of explosion if battery is replaced by an incorrect type.
- Keep the battery out of reach of children.
- Batteries may explode if exposed to naked fire. Never dispose of batteries in a fire.
- Never replace the battery on your own; have the dealer do it for you.
- Disposed of used batteries observing local regulations.
- Before disposing the device, please remove the battery.

To remove the battery open the screws on the housing of the device.

## **Notes on Installation**

1. This product shall be installed near the rear view-mirror, at the center of windshield, if possible, for optimal viewing.
2. Make sure that the lens is within the wiping range of the windshield wiper to ensure a clear view even when it rains.
3. Do not touch the lens with your fingers. Finger grease may be left on the lens and will result in unclear videos or snapshots. Clean the lens on a regular basis.
4. Do not install the device on a tinted window. Doing so may damage the tint film.
5. Make sure that the installation position is not hindered by the tinted window.
6. To use the products of the attached power charger only, please do not use other brand power charger, in order to avoid equipment burn or cause the battery explosion.

## Caution

- Due to local laws and vehicles safety considerations, do not operate the device while driving.
- Set up time and date accurately before you use this device.
- Please use SuperCar software in condition that Google Map is function normally.
- The firmware function in the device is for reference only, please follow the actual road condition.
- The results of GPS positioning are only for reference, and should not affect the actual driving situation. The system also cannot ensure the positioning accuracy.
- GPS positioning accuracy may differ depending on weather and location such as high buildings, tunnels, undergrounds, or forests.  
GPS satellite signals cannot pass through solid materials (except glass). Tinted window will also affect the performance of the GPS satellite reception.
- GPS reception performance on each device may differ. The system cannot determine the accuracy of the positioning results from different devices.
- The values displayed in this system, such as speed, position, and the distance warning to the speed camera set points, may be inaccurate due to the influence of surrounding environment. They are for your reference only.
- The system is used only for non-commercial use, within the maximum limits permitted by applicable law. Our company does not accept any responsibility for any data loss during the operation.
- It is normal that this product gets warm when in use.
- Improper use or operation of the product may result in damage of the product or its accessories and void the warranty.

## 1 Introduction

Thank you for purchasing this advanced Car Recorder. This device is specifically designed for real time video and audio recording when driving.

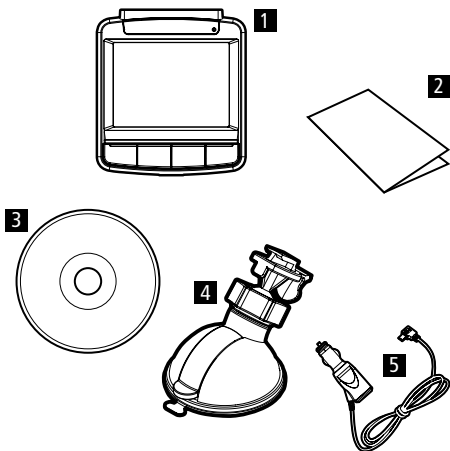
### 1.1 Features

- WFHD camera (2560x1080 @ 30fps)
- 2.4" LCD color screen
- Wide angle lens
- Motion detection
- Automatic Emergency recording for collision detection
- Supports SDHC up to 32GB
- Supports WDR / GPS/ Parking Mode

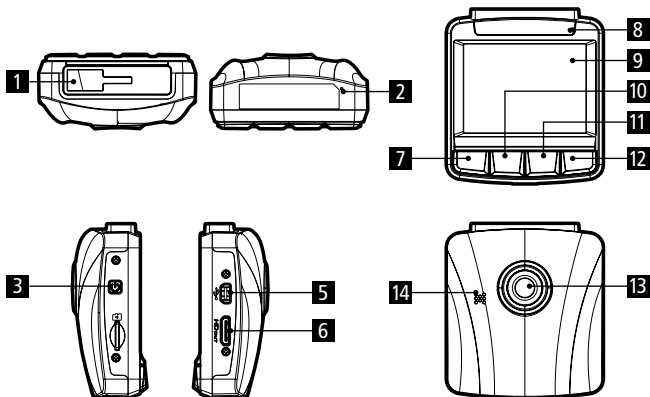
### 1.2 Package Contents

The package contains the following items. In case there is any missing or damaged item, contact your dealer immediately.

- 1 Car Recorder
- 2 Quick start guide
- 3 CD-ROM
- 4 Bracket
- 5 Car adapter



## 1.3 Product Overview



No	Item
1	Bracket Socket
2	Microphone
3	Power Button
4	Memory Card Slot
5	USB Connector
6	HD(Mini HDMI) Connector
7	Back Button (↔)
8	LED Indicator
9	LCD Panel
10	Up Button (▲)
11	Down Button (▼)
12	Enter Button (OK)
13	Wide Angle Lens
14	Speaker

### Note:

To operate the camcorder, press the corresponding buttons (7,10,11,12) according to guide icons shown the screen.

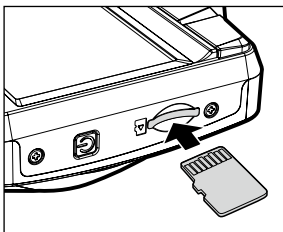


## 2 Getting Started

### 2.1 Inserting the Memory Card

Insert memory card with the gold section facing upward and the screen of the device facing upward too, as illustrated.

Push the memory card in until a click sound is heard, indicating the card is in position.



#### To remove the memory card

Push to eject the memory card out of the slot.

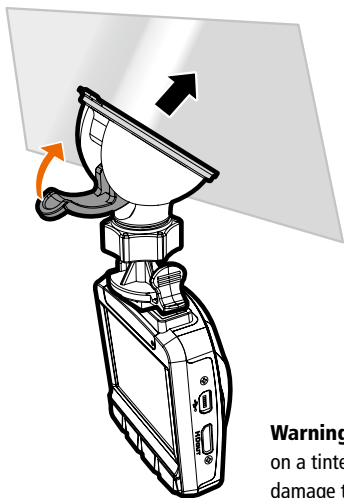
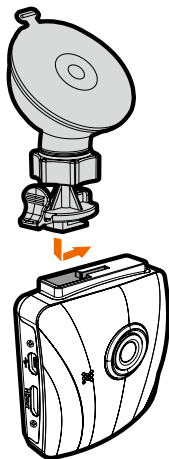
#### Note:

1. Do not remove or insert the memory card when the device is turned on. This may damage the memory card.
2. Please use a 32GB, Class 6 or above Micro SD card.
3. Please format the micro SD cards before the initial use.

## 2.2 Installing in Vehicles

### 2.2.1 Mount to Windshield

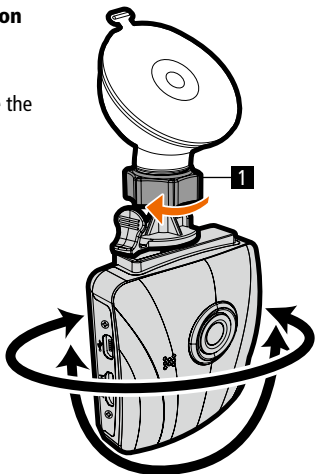
1. Attach the bracket to the camcorder.  
Slide it into the bracket holder until you hear a click.
2. Before installing the bracket, please use alcohol to clean the windshield and suction cup of the bracket. Wait for dry and press suction-cup on the windshield.
3. Hold the base firmly on the windshield and press down the clamp to mount the car holder to the windshield. Make sure the base is securely locked in place.



**Warning:** Do not install the camcorder on a tinted window. Doing so may damage the tint film.

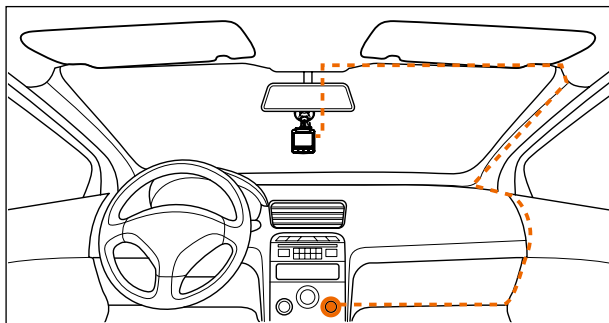
### 2.2.2 Adjust the Device Position

1. Loosen the knob (1) to swivel the device vertically or horizontally.
2. Then tighten the knob to make sure the device is securely locked in place.



## 2.3 Connecting to Power

Use only the supplied car adapter to power up on the device and charge the built-in battery.




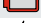




1. Connect one end of the car adapter to the USB connector of the device.  
USB port input: DC 5V / 1A
2. Plug the other end of the car charger to the cigarette lighter socket of your vehicle. Once the vehicle engine is started, the device automatically turns on. Car charger input: DC 12 / 24V.

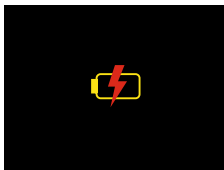
### Note:

1. To use the products of the attached power charger only, please do not use other brand power charger, in order to avoid equipment burn or cause the battery explosion.
2. Red LED light indicates the battery is charging; when devices are connecting power cord to charge and the red light flashes, it indicates the device temperature is too high and should unplug the power cord immediately.
3. Please take note if the environment temperature reaches 45°C or above, the car adapter still can supply power to device, but it will not charge the Lithium-ion battery. This is the characteristic of Lithium-ion and is not a malfunction.

## Battery Status Indicator:

Icon	Description
	Full battery power.
	2/3 battery power.
	1/3 battery power.
	Out of battery power.
	Battery is charging.
	Connect the car adapter to charge the battery, battery is full charged.

## Low Voltage



**Note:** If the device is connected to the car adapter and turned on, and the screen displays a charging reminder symbol such as the image above, it means that the available voltage is too low. Please wait for a few minutes until the charging reminder symbol disappears before entering the video recording mode to prevent invalid recording or file damage.

## 2.4 Powering the Device On / Off

### 2.4.1 Auto Power On/Off

Once the vehicle engine is started, the device automatically turns on. If the Automatic Record function is enabled, the recording will automatically start right away after the device turns on.

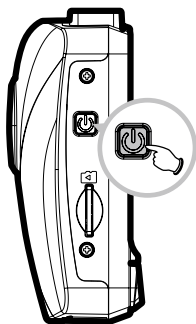
Once the vehicle engine is shut down, the camcorder automatically saves the recording and turns off the power within 10 seconds

**Note:** Automatic power up and shut down assumes the power socket is linked to the car ignition.

### 2.4.2 Manual Power On/Off

To manually turn on the power, press the POWER button. Press power button shortly to turn off the device.

To reset, press and hold the POWER button for at least 8 seconds.






## 2.5 Initial Settings

Before using the device, we recommend you to enable the Automatic Record function and set up the correct Date and Time.

### 2.5.1 Set the Date and Time

To set the correct date and time, follow the steps as below:

1. Press the  button to enter the OSD menu.
2. Press the  button to select Date / Time and press the **OK** button.
3. Press the  button to adjust the value and press the **OK** button to move to another field.
4. Repeat step 3 until the date and time setting is complete.



**Note:** To ensure the accuracy of the video file time, please reset the date and time when the battery power runs out or when not in use over 7 days.

### 3 Using the Car Recorder

#### 3.1 Recording Videos

##### 3.1.1 Record Videos while Driving

When the vehicle engine starts up, the camcorder automatically turns on and starts recording.

Recording will automatically stop when the engine is switched off.

**Note:** On some cars, the recording will continue when the engine is switched off.

With some vehicle models, the automatic power up and off feature of this car camcorder will not function because the cigarette lighter/power socket is not linked to the ignition system.

To work around this issue, please do one of the following:

- Manually turn on or off the cigarette lighter/power socket if this is possible with your vehicle model.
- Manually plug in the power adapter into the socket to turn on the car camcorder and unplug from the socket to turn off the car camcorder.
- One video file is saved for every 3 or 5 minutes of recording. If the memory card capacity is full, the oldest file in the memory card will be overwritten.



### 3.1.2 Parking Mode

If Parking Mode is activated, when manual power off, or turned off the car adapter when the device is turned on, the system alert message "Press OK Key to enter Parking Mode after 10sec." will be displayed on the screen. This means the system will enter Motion Detection automatically in 10 seconds; when the device detects any motion or collision in front of lens, Video Record will be activated for a duration the same as the length setting.

#### **To set the parking mode, do the following:**

1. Press the ↶ button to enter the OSD menu.
2. Press the ▲/▼ button to select **Parking Mode** and press the **OK** button.
3. Press the ▲/▼ button to select Motion Detection/ Parking Collision/ Dual Mode and press the **OK** button.
4. Press the ↶ button to exit the menu.

#### **Note:**

1. When the battery is fully charged and is in good condition, Motion Detection can record continuously for about 30 minutes.
2. As the device is used, the battery storage capacity will decrease gradually. This is a normal phenomenon for the battery
3. The LCD will be off in 30 seconds after the Motion Detection function is enabled.

### 3.1.3 Emergency Recording

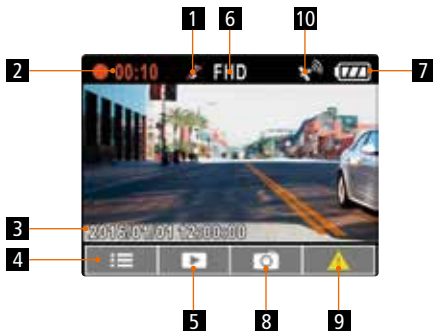
During normal video recording, press the **OK** button to begin emergency recording mode. The "Emergency" message will be displayed immediately on the upper left corner of the screen, and the recorded file will be continuous and protected from being overwritten. After complete the emergency recording, it will be back to normal recording mode

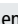

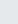
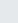


#### **Note:**

1. If the Collision Detection function is enabled and a collision is detected, the camcorder will automatically trigger the emergency recording feature.
2. The emergency recording file is created as a new file, which will be protected to avoid being overwritten by normal loop recording. 8 GB (or above) memory card can save up to 10 emergency video files. The alert message of "Emergency files are full" will pop up on the screen when the emergency recording files are full, and the oldest emergency file will be automatically deleted when a new emergency recording file is created.

### 3.1.4 The Recording Screen



No.	Item	Description
1	Voice Record	Indicates turn off voice record
2	Duration	Indicates the current recording duration.
3	Date and time	Indicates the current recording date and time.
4	Guide icon (Menu)	Press the  button to enter the OSD menu.
5	Guide icon (Playback)	Press the  button to switch to Playback mode.
6	Resolution	1080P 30fps/ 720P 60fps/ 720P 30fps
7	Battery	Indicates the remaining battery power.
8	Guide icon (Snapshot)	Press the  button to take a snapshot during recording.
9	Guide icon (Emergency)	Press the <b>OK</b> button to enter and initiate emergency recording, and the recorded file will be protected.
10	Satellite positioning icon	The  icon appears on the screen when satellite positioning of the device is ready

## 3.2 Playback Videos and Photos

1. During recording, press ▲ button to browse for the desired video and photo file.
2. Press the ▲/▼ button to select the file that you want to browse and press the **OK** button.
3. Press the ▲/▼ button to view the next or the previous file and press the **OK** button to view the file in full screen.
4. When user want to playback the emergency video file, they could check on file name as EMER.

### 3.2.1 The Playback Screen

Video Playback Screen



Photo Playback Screen

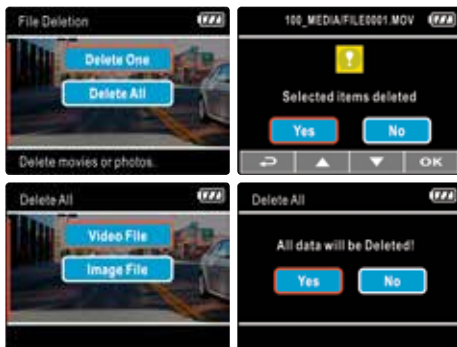


No.	Item	Description
1	Guide icon (Back)	Press the ↶ button to return to file selection display.
2	Guide icon (Previous)	Press the ▲ button to view the previous video/photo.
3	Guide icon (Next)	Press the ▼ button to view the next video/photo.
4	Guide icon (Pause)	Press the <b>OK</b> button to pause the video playback.
5	Duration	Indicates the elapse time / total recording time.
6	Battery	Indicates the estimated remaining battery power.
7	File name	Indicates video / photo file name.

### 3.2.2 Deleting Files

To delete file(s), do the following:

1. If recording is in progress, press the ↶ button to enter the OSD menu.
2. Press the ▲/▼ button to select **File Deletion** and press the **OK** button.
3. Press the ▲/▼ button to select Delete One or Delete All, then press the **OK** button.
4. After select Delete One, press the ▲/▼ button to select that you want to delete, then press the **OK** button.
5. After select Delete All, press the ▲/▼ button to select Video File or Image File that you want to delete, then select YES or NO to delete.



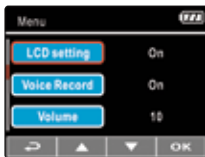
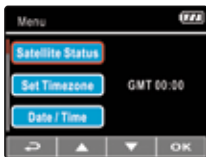
#### Note:

1. Deleted files CANNOT be recovered. Ensure the files have backup before deletion.
2. Emergency files cannot be deleted from this operation. They can be deleted by inserting memory card into your PC or format memory card.

## 4 Adjusting the Settings

### 4.1 Using the Menu

You can customize the video recording and other general settings via the on-screen display (OSD) menus. Please note that the menus consist of several pages. The menus can be selected by the ▲/▼ button.



1. If recording is in progress, press the ↶ button to open enter the OSD menu.
2. Press the ▲/▼ button to select a menu option and press the **OK** button to enter the selected menu.
3. Press the ▲/▼ button to select the desired setting and press the **OK** button to confirm the setting.
4. Press the ↶ button to exit the menu, back to recording mode

## 4.2 Menu Tree

Refer to the below table for details on menu items and available menu options.

Menu option	Description	Available option
Satellite Status	Displays the current state of the satellite reception.	
Set Timezone	Automatically synchronize with the local satellite time. When this feature is enabled, the system will use the satellite time, and you cannot manually change the time.	Press ▲/▼ button to set the satellite time. You may customize it between GMT +14:00 ~ GMT -12:00
Date / Time	Set the date and time.	Press ▲/▼ button to adjust the value, press the <b>OK</b> button to switch the field and confirm
Resolution	Set the video resolution.	1920 x 1080 30fps / 1280 x 720 30fps / 1280 x 720 60fps
EV	Set the exposure compensation.	Press ▲/▼ button to set the exposure level. You may customize it between -2 ~ +2
LCD Setting	Set LCD off time. Device screen will be off after a set time if no operation is detected during the standby or record mode. Press any button will switch it on. (Recording is not affected when screen is off).	On / Turn Off After 30 sec. / Turn Off After 3 min. / Off
Voice Record	Setting for activating audio in the video.	On / Off

## 4.2 Menu Tree

Menu option	Description	Available option
Volume	Set the volume up and down	1~10
Distance Unit	Select the unit for distance display.	KM / MILE
Record Interval	Save respective video files in a length of the selected duration.	3 min. / 5 min.
Collision Detection	Enable / Disable the collision detection. If this function is enabled and any collision is detected, the device will automatically trigger the emergency recording.	High Sensitivity / Normal Sensitivity / Low Sensitivity / off
Parking Mode	If Parking Mode is activated, when manual power off, or turned off the car adapter when the device is turned on, the system alert message "Press OK Key to enter Parking Mode after 10sec." will be displayed on the screen. This means the system will enter Motion Detection automatically in 10 seconds; when the device detects any motion or collision in front of lens, Video Record will be activated for a duration the same as the length setting	Off Motion Detection Parking Collision Dual Mode
WDR	Present a crisp and clear picture quality with harmonious contrast in a high contrast, high discrepancy environment.	On / Off



## 4.2 Menu Tree

Menu option	Description	Available option
Language	Set the on-screen display menu language.	English
Anti-flicker	The local power supply may vary by region. You should be aware of the „Table for voltage and frequency of different countries“ for the correct setting	50Hz / 60Hz
File Deletion	Delete the file(s).	Delete One/ Delete All
Format	Format the memory card inserted in the equipment. All the files in the card will be erased.	Yes / No
Default	Reset all settings to factory default settings.	Yes / No
About	Firmware Version	

## 5. Installing the Software

1. Place the attached CD ROM into the CD player.
2. If the CD does not execute automatically, please use Windows File Manager to execute the **Install\_CD.exe** file in the CD.

The following screen will be shown up:



3. Press the [Menu] item to start the installation process according to the instructions on-screen

## 6. SuperCar



Nr.	Element
1	Video Player
2	Play / Pause
3	Previous
4	Next
5	Stop
6	Google Map
7	Compass
8	Speed Meter
9	File Path
10	Browser File
11	File List
12	File Name
13	Volume
14	Current Duration / Total Duration
15	Signal Noise Ratio (SNR)
16	G-Sensor

### Note:

1. To display the route on Google Maps, please make sure the internet is connected before starting the video playback
2. Video files (MOV / TS) and GPS/G-Sensor files (NMEA) must be stored in the same folder before starting the playback.
3. The included SuperCar software is only for Windows computers.

## 7. Specifications

Item	Description
Image sensor	1/2.7" CMOS sensor
Effective pixels	1920 (H) x 1080 (V)
Storage media	Support Micro SDHC, up to 32GB class 6 or above
LCD display	2.4" LCD color TFT (112K pixels)
Lens	Wide Angle Fixed Focus lens   F2.0, f=3.8mm
Focus range	1.5m~Infinity
GPS	U-blox G7020-KT
Movie Clip	Resolution: 1080p/30fps, 720p/60fps, 720p/30fps Format: MOV
Still image (Snapshot)	Resolution: 2M 1920(H) x 1080(V) Format: DCF (JPEG, Exif: 2.2)
Shutter	Electronic shutter Auto: 1/33, 120- 1/30sec.
G-Sensor	3-Axis G-Force sensor
ISO	Auto
White Balance	Auto
Microphone	Yes
Speaker	Yes
Interface	Mini USB; Mini C Type HDMI
Battery	Built-in 470mAH Li-polymer rechargeable
Operating Temperature	0° ~ 60° C
Operating Humidity	20 ~ 70% RH
Storage Temperature	-20° ~ 70° C
Dimensions	70 x 63 x 31.3 mm
Weight	approx. 94 g

## 8 CE Conformity

The Manufacturer hereby declares that the CE marking was applied to the Rollei CarDVR-300 in accordance with the basic requirements and other relevant provisions of the following CE Directives:

2011/65/EC	RoHs Directive
2004/108/EC	Low Voltage Directive
1999/5/EG	R&TTE Directive
2006/95/EEC	LVD Directive
2002/96/EG	WEEE Directive



The EC Declaration of Conformity can be requested from the address specified on the Warranty card.



**Distribution:**

Rollei GmbH & Co. KG  
Tarpfen 40/Gebäude 7b  
22419 Hamburg

**Service Hotline:**

+49 40 270750270

**Rollei Return Service**

**Germany:**

Denisstraße 28a  
67663 Kaiserslautern



[www.rollei.de/social](http://www.rollei.de/social)

[www.rollei.com/social](http://www.rollei.com/social)

[www.rollei.com](http://www.rollei.com)