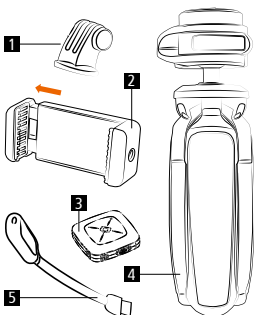


Box Content



- 1** Actioncam adapter
- 2** Smartphone holder
- 3** Bluetooth^{®1)} remote control
- 4** Mini tripod
- 5** LED light and USB cable

Technical data

Tripod	
Weight	227 g
Max. height	12.5 cm
Folded length	17.5 cm
Max. load	1 kg
Charging time	Up to 5 hours
Material	Plastic
LED light	
Weight	16 g
Voltage	5 V
Power	1.2 W
Operating time	Up to 13 hours*
Remote control	
Weight	7.5 g
Dimension	32 x 32 x 10 mm
Connection	Bluetooth [®]
Smartphone holder	
Weight	30 g
Size folded	35 x 25 x 73 mm
Size extended	35 x 25 x 104 mm
Clip range	56 – 85 mm

*If battery of tripod is fully charged.
Subject to technical changes.



1 Status indicator light

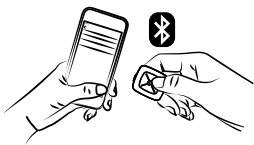
2 Shutter button

3 On/Off switch

4 Wrist strap hole

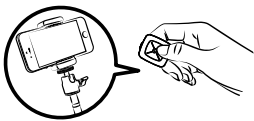
Turn on

Put the On/Off switch in the position of ON and the remote control will enter the boot mode.



Bluetooth® pairing

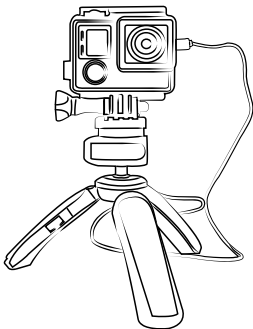
If the remote control is turned on, the status indicator light will flash green. Activate the Bluetooth® function within the settings of your smartphone. As soon as you see the Rollei device on your display, click on it to connect both devices. If the pairing was successful, the indicator light on the remote control will be turned off.



You are now able to take pictures by pressing the release button of the remote control when you are in the camera app of your smartphone.

Note: This remote control supports iOS 5.0 or above and Android 2.3.6 or above.

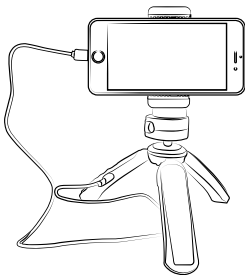
1) The Bluetooth® word mark and logos are registered trademarks owned by Bluetooth SIG, Inc. and any use of such marks by Rollei is under license. Other trademarks and trade names are those of their respective owners.



Attach an actioncam onto the tripod by using the actioncam adapter. While shooting, the camera can be charged by using the micro USB slot and a corresponding cable (needs to be bought additionally).

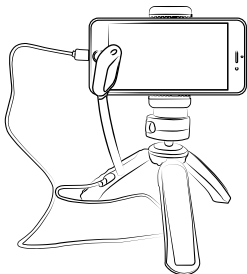
Please note that you need to check in advance whether your camera can be charged while using.

Furthermore you can use the tripod as normal power bank and charge your device without using.

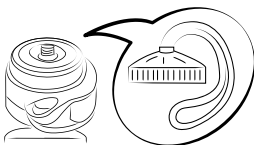


Attach a smartphone onto the tripod by using the smartphone holder. While shooting, the smartphone can be charged by using the micro USB slot and a corresponding cable (needs to be bought additionally).

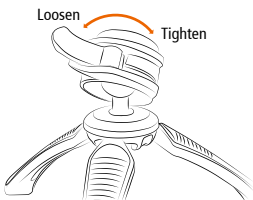
Furthermore you can use the tripod as normal power bank and charge your device without using.



Furthermore you can connect the LED light within the USB slot of the tripod, to increase the light situation of your photo.



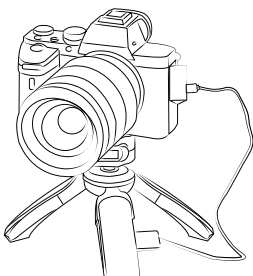
The 1/4 inch screw can be used to mount accessories or a camera directly. To easily transport the tripod there is a strap that can be screwed on when the tripod is not used.



Open the flip lock to loosen the ball head. If you have put it into the desired position you can easily lock the ball head again by tighten the flip lock.



The tripod has a built-in power bank. This can be used to charge your camera or smartphone directly. Please note a corresponding cable to charge your device is not included.



Attach a DSLM camera onto the tripod by using the 1/4 inch thread of your camera.

Disposal



Disposal of Packaging:

For disposal please separate packaging into different types. Cardboard and board must be disposed of as paper and foil must be recycled.



Disposal of Waste Electrical and Electronic Equipment and/or Battery by users in private households in the European Union.

This symbol on the product or on the packaging indicates that this cannot be disposed of as a household waste. You must dispose of your waste equipment and battery by handing it over to the applicable take back scheme for the recycling of electrical and electronic equipment and battery. For more information about recycling of this equipment and battery, please contact your city office, the shop where you purchased the equipment or your household waste disposal service. The recycling of materials will help to conserve natural

Disposal

resources and ensure that it is recycled in a manner that protects human health and environment.

Battery Warning

- Never dismantle, crush, or pierce the battery, or allow the battery to short circuit. Do not expose battery being placed in high temperature environment, if battery leaks or bulges, stop continue to use.
- Always charge using the charger. Risk of explosion if battery is replaced by an incorrect typ.
- Keep the battery out of the reach of children.
- Batteries may explode if exposed to fire. Never through batteries into the fire.
- Never exchange batteries by yourself, please let it be done by the retailer.
- Dispose used batteries by observing local regulations.
- Before disposing the device, please remove the battery. For removing the battery open the housing via the screws.

Attention: It is not allowed to exchange the battery independently!

Conformity

The Manufacturer hereby declares that the CE marking was applied to the Rollei Smart Photo Power in accordance with the basic requirements and other relevant provisions of the following CE Directives:

EMC directive 2014/30/EU
RoHS directive 2011/65/CE
RED directive 2014/53/EU
2012/19/EC WEEE Directive



The EC Declaration of Conformity can be requested from the address specified on the Warranty card.