

Timer Remote Control Instruction Manual

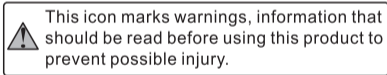
Table of Contents

For Your Safety	1
Introduction	3
Parts of the Timer Remote Control	3
Body	3
Display Panel	4
Inserting Batteries	4
Replacing Batteries	4
When the Timer Remote Controls NOT in Use.....	4
Lighting /Lock Button.....	5
Connection the Timer Remote Control	5
Using the Timer Remote Control.....	6
Timed Photography	6
Manual Release.....	13
Precautions for Use	14
Caring for the Timer Remote Control	14
Specifications.....	15

For Your Safety(1/2)

To prevent damage to your product or injury to yourself or to others, read the following safety precautions in their entirety before using this equipment. Keep these safety instructions where all those who use this equipment will read them.

The consequences that could result from failure to observe the precautions listed in this section are indicated by the following symbol:



Do not disassemble or modify

Failure to observe this precaution could result in electric shock or product malfunction. Should the product break open as the result of a fall or other accident, remove the batteries and take

the product to manufacturer for inspection.

Keep dry

Do not handle with wet hands or immerse in or expose to water or rain. Failure to observe this precaution could result in fire or electric shock.

Do not use in the presence of flammable gas

Failure to observe this precaution could result in explosion or fire.

Keep out of reach of children

This device contains small parts which may pose a choking hazard. Consult a physician immediately if a child swallows any part of this device.

Turn off immediately in the event of malfunction

Should you notice smoke or an unusual smell coming from this device, remove the battery

immediately and take the device to an authorized service representative for inspection, taking care to avoid burns. Continued operation could result in injury.

Do not expose to high temperatures

Do not leave the device in a closed vehicle under the sun or in other areas subject to extremely high temperatures. Failure to observe this precaution could result in fire or in damage to the casing or internal parts.

Observe precaution when handling batteries

Batteries may leak or explode if improperly handled. Observe the following precautions when handling batteries for use in this device:

- Use only batteries listed in this manual. Do not mix old and new batteries or batteries of different types.

For Your Safety(2/2)

- Read and follow all warnings and instructions provided by the manufacturer.
- Do not short or disassemble.
- Do not expose to flame or excessive heat.
- Do not attempt to insert batteries upside down or backwards.
- Batteries are prone to leakage when fully discharged. To avoid damage to the product, be sure to remove the batteries when leaving the product unattended for prolonged periods or when no charge remains.
- Should liquid from the batteries come into contact with skin or clothing, rinse immediately with fresh water.

Introduction

Thank you for your purchasing a Timer Remote Control. The Timer Remote Control is equipped with an interval timer suited to a wide variety of tasks, including astronomical photography.

Parts of the Timer Remote Control(2/3)

Please see the back of the cover illustrations.

Body

- ① Connector
- ② Cord
- ③ Focus and the release of two-color indicator light
- ④ Display panel
- ⑤ TIMER START/STOP button
- ⑥ SET button
- ⑦ (Lighting /lock)Button
- ⑧ Arrow button
- ⑨ Shutter-release button
- ⑩ Battery-chamber cover
- ⑪ Strap fixed deduction(available separately; use cell phone or other similar strap)

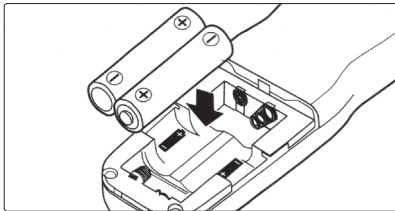
Display Panel*

- ① Functional cursor
- ② Timer
- ③ Lock indicator
- ④ Low battery indicator
- ⑤ TIMER ACTIVE indicator
- ⑥ Speaker on/off indicator
- ⑦ SET indicator
- ⑧ RELEASE indicator
- ⑨ Number of shots

*The illustration inside the front cover shows the control panel with all elements lit. In the other illustrations throughout this manual, elements relevant to the explanation in the accompanying text are shown in black. Indicators not mentioned in the text are shown in gray.

Inserting Batteries

Slide the battery chamber cover (⑩) from the back of the Timer Remote Control and insert two AAA 1.5V LR03 alkaline batteries (available separately) as shown.



The Low Battery Indicator ()

The low battery indicator(④) will blink when the batteries are low. Please replace the battery

Replacing Batteries

when replacing batteries:

- 1 Check that the TIMER ACTIVE(⑤) and RE-LEASE (⑧) indicators are not displayed.
- 2 Turn the camera off and disconnect the Timer Remote Control
- 3 Remove the batteries.
- 4 Wait until the control panel has gone out and insert new batteries.

When the Timer Remote Control is not in Use

The Timer Remote Control is not equipped with an off switch.

To reduce the drain on the batteries when the Timer Remote Control is not in use, end shooting and check that the TIMER ACTIVE (⑤), SET(⑦), and RE-LEASE(⑧) indicators are not displayed. The drain on the batteries increases when these indicators are flashing.

The TIMER ACTIVE SET and RELEASE Indicators



If this flashes	Expression means: Close method
TIMER ACTIVE	Timer active (page 11); press TIMER START/STOP button (5).
SET	Settings can be modified (page 7);press SET button (6).
RELEASE (TIMER ACTIVE not flashing)	Manual release active (page 14); release shutter release button (9); if button is in HOLD position, release shutter release lock).

Lighting/Lock Button

Press the lighting/lock button (7) briefly to activate the control panel backlight. The backlight will remain lit for about six seconds;pressing the arrow button(8) while the backlight is on extends the timer for another six seconds. To lock all controls except the shutter release (9) and lighting/lock buttons, press the illuminator lock button until the lock icon (L) is displayed in the control panel. To release the lock, Please press the lighting/lock button until the lock icon is no longer displayed.



1. Turn the camera off.
2. Check that the TIMER ACTIVE (5) and RELEASE (8) indicators are not displayed.
3. Remove the Timer Remote Control socket terminal cover from the camera. Connect the camera cable into the camera (1). The camera is firmly connected.

Disconnecting the Timer Remote Control

After checking that the TIMER ACTIVE (5) and RELEASE (8) indicators are not displayed,turn the camera off and disconnect the Timer Remote Control. Replace the Timer Remote Control socket terminal cover.

The Timer Remote Control functions are:

- **An automatic timer** (pp.7-13): Choose the delay (time before shooting starts), exposure time, interval, and number of shots for timed interval photography. Shutter speed can be selected with the camera if desired (pg.13).
- **A manual release** (pg.14): Take photos manually using the shutter release button on the Timer Remote Control. Photos can be taken manually even when the timer is running.

1. Adjust Camera Settings

1.1 Connect the Timer Remote Control (pg.6) and turn the camera on.

1.2 Adjust camera settings as follows (see the camera manual for details):

Exposure mode	M(manual)
Shutter speed	Bulb
Interval timer	Off
Focus mode	AF-C (continuous-servo autofocus or M (manual)
Continuous	S (single frame)

* Select release priority if available.

2. Set the Timer

2.1 Press the **SET** button (ⓐ). **SET** will flash in the display panel.

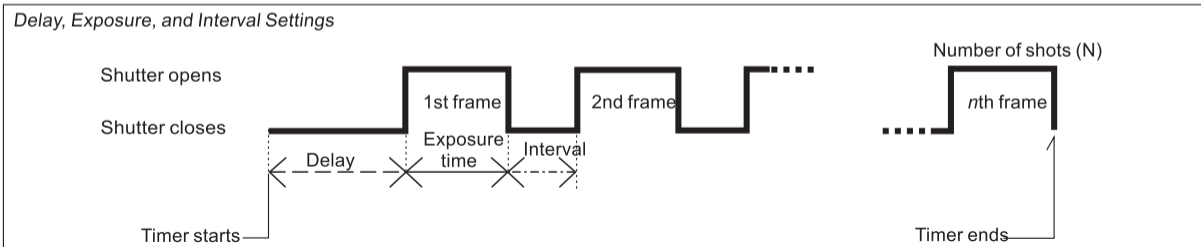


The Timer Remote Control can be connected to the camera after the timer has been set.

Timed Photography (2/7)

2.2 Adjust the following settings:

Option	Description	Supported settings
DELAY	Delay before shutter is released	0s to 99hrs 59 min 59s (in one-second increments)
LONG	Exposure time	
INTVL	Interval	1s to 99hrs 59 min 59s (in one-second increments)
N	Number of shots	1 to 399, - - (unlimited)
♪	Speaker on/off	♪ (on), 🚫 (off)



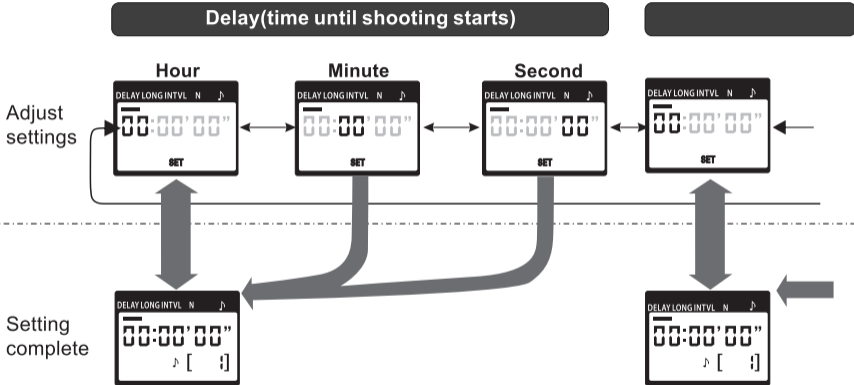
Timed Photography(3/7)

Setting the Timer

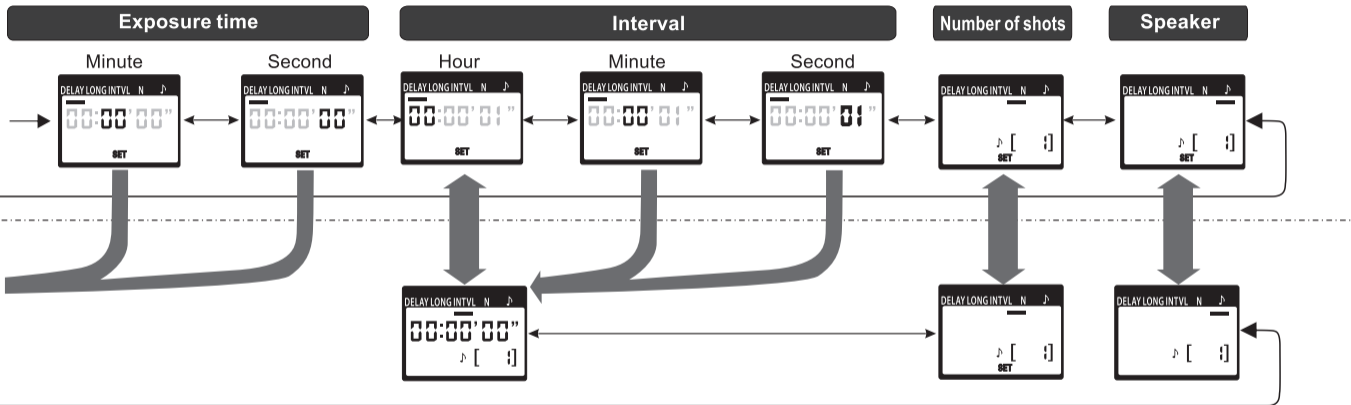
Use the arrow button to set the timer.
Press left or right button to select,
up or down button to change the timer.
The current selection is displayed by the
selection cursor (①).



Press SET (⑥) at any time to complete the operation and display the new settings for the selected item. To view other settings, press the arrow button left or right. The current selection is indicated by the selection cursor (①). Press the SET button to edit the current setting as described above.



Timed Photography (4/7)



Timed Photography (5/7)

Setting the Timer

To ensure correct operation, choose an interval at least one second longer than the exposure time. When using auto focus, set the delay to two seconds or more and choose an interval at least of two seconds or longer than the exposure time ensures that the camera has time to focus. When using long exposure noise reduction (available with some digital camera), the interval should be at least twice exposure time. Interval of 00:00:00 will automatically be reset to 00:00:01 when the SET button (⑥) is pressed to put setting into effect.

To set the number of shots to -- (unlimited), select 1 and press the arrow button (⑧) down or select 399 and press the arrow button up.

2.3 After adjusting all settings as desired, press the set button (⑥) to put the new settings into effect. Timer will issue a beep-(speakers in the open circumstances), and the SET indicator will go out.



The new settings will remain in effect until changed or until the batteries are removed or exhausted.

3. Start the Timer

Press the TIMER START/STOP button (⑤). The timer will start and TIMER ACTIVE (5) will flash in the panel. Between shots, the control panel will show the time remaining until the next photo is taken. Two second focus output, focus and release of light-green light

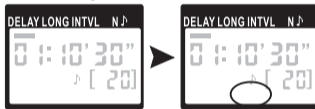
While the shutter is open, the panel will show the timer remaining until the shutter closes, and the release lamp and RELEASE indicator (⑧) will flash at one-second intervals, focus and the release red indicator light. If the speaker is turned on, the timer will be issued one second intervals for the beeps, each take a picture, the remaining number of shots will be updated.

Setting the Timer

To ensure correct operation, choose an interval at least one second longer than the exposure time. When using auto focus, set the delay to two seconds or more and choose an interval at least of two seconds or longer than the exposure time ensures that the camera has time to focus. When using long exposure noise reduction (available with some digital camera), the interval should be at least twice exposure time. Interval of 00:00:00 will automatically be reset to 00:00:01 when the SET button (⑥) is pressed to put setting into effect.

To set the number of shots to -- (unlimited), select 1 and press the arrow button (⑧) down or select 399 and press the arrow button up.

2.3 After adjusting all settings as desired, press the set button (⑥) to put the new settings into effect. Timer will issue a beep-(speakers in the open circumstances), and the SET indicator will go out.



The new settings will remain in effect until changed or until the batteries are removed or exhausted.

3. Start the Timer

Press the TIMER START/STOP button (⑤). The timer will start and TIMER ACTIVE (5) will flash in the panel. Between shots, the control panel will show the time remaining until the next photo is taken. Two second focus output, focus and release of light-green light

While the shutter is open, the panel will show the timer remaining until the shutter closes, and the release lamp and RELEASE indicator (⑧) will flash at one-second intervals, focus and the release red indicator light. If the speaker is turned on, the timer will be issued one second intervals for the beeps, each take a picture, the remaining number of shots will be updated.

Timed Photography (6/7)

Panel displays (*Timer Active*)



When that did not open the shutter: shots: Time remaining
until next shot

While shutter is open: Time remainig

Number of shots remaining

Flashes whiles shutter is open

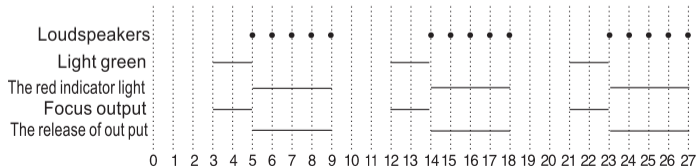
Flashes while timer is active

4. End Shooting

Shooting will end automatically when the selected number of shots has been taken. To end shooting before all photos have been taken, press the **TIMER START/STOP** button(⑤).

The Speaker and Release Lamp

The following illustration shows when a beep will sound (●) and the release lamp flash (○) with a delay of 5s, an exposure time of 4s, and an interval of 5s.



Timed Photography (7/7)

Use the camera to select the shutter speed.



To take photos at the shutter speed selected with the camera, adjust settings as follows:

Camera	Exposure mode	M (manual) or S (shutter-priority auto)
	Shutter speed	Any
	Interval timer	Off
	Focus mode	AF-C (continuous-servo autofocus) or M (manual)
	Shooting mode	S (single frame)
Timer Remote Control	Exposure time	0s
	Interval	Longer than camera shutter speed

*Select release priority if available

*When using autofocus, choose interval at least two seconds longer than the camera shutter speed to allow the camera time to focus. When using long exposure noise reduction (available with some digital cameras), choose an interval at least double the camera shutter speed.

Using the Timer

Before using the timer for extended periods, check that the batteries are fully charged. Replace the batteries when the low battery indicator () flashes in the panel ().

The Timer Remote Control shutter release button (9) functions in much the same way as the camera shutter release button.

1. Adjust Camera Settings

Connect the Timer Remote Control (pg. 6) and turn the camera on. Choose exposure mode, shutter speed, focus mode, and shooting mode as desired.

2. Take Pictures

2.1 Press the Timer Remote Control shutter release button (9) halfway and check the focus and exposure, focus and the release of bright green light. And then click to complete your photos. When the shutter opens, focus and the release red indicator light every one second camera issued a beep, the RELEASE indicator (8) will flash

and the display will show the shutter has opened the time.

To keep the shutter release button fully pressed for bulb photograph, slide the button to the HOLD position. Slide it in the opposite direction to release the lock.



2.2 Release the button to end shooting.

The Timer Remote Control shutter release button can be used when no batteries are inserted. The Show panel will remain off and no beep will sound.

The shutter release button can be used to release the shutter manually while the timer is active. Timer count-down (Package so display panels, focus and the release of the indicator light and beep). Continues during manual release. If a manual release overlaps with an automatic release, the shutter will remain open until both exposure times have expired.

Precautions for Use

Check the camera battery level and number of exposures remaining before using the Timer Remote Control(see the camera manual for detail). The timer will continue to operate even when no pictures can be recorded due to low battery, lack of film or memory, or lack of space in the memory buffer (digital cameras only). An AC adapter (available separately) is recommended for longer sessions.

Some camera have a AF activation option that determines whether the camera will focus when the shutter release button is pressed halfway(see the camera manual for details). Enables shutter release button AF activation when using the Timer Remote Control please note that the timer is less accurate than most watches of household clocks.

Caring for the Timer Remote Control

Do not drop: The product may malfunction if subjected to strong shocks or vibration.

Keep dry: This product is not waterproof and may malfunction if immersed in water or exposed to high levels of humidity. Rusting of the internal mechanism can cause irreparable damage.

Avoid sudden changes in temperature: Sudden changes in temperature, such as occur when entering or leaving a heated building on a cold day, can cause condensation inside the device. To prevent condensation, place the device in a carrying case or a plastic bag before exposing it to sudden changes in temperature.

Keep away from strong magnetic fields: Strong static charges or the electromagnetic fields produced by equipment such as radio transmitters could interfere with the device.

A note on electronically-controlled devices: In extremely rare instances, unusual characters may appear in the show panel and the device may stop functioning. In most cases, this phenomenon is caused by a strong external static charge. Turn the camera off, disconnect the Timer Remote Control, remove the batteries, and then replace them once the control panel has turned off. Caution is required when handling the batteries, which may be hot from use. In the event of continued malfunction, contact your retailer or representative.

Display panel: LCD displays tend to darken at high temperatures and exhibit slower response times at low temperatures. This does not indicate a malfunction.

Specifications

Supported cameras	Nikon, Canon, Sony (depending on your scope of delivery)
Timer delay	0 s to 99 hrs 59min 59s in one-second increments
Exposure time	0 s to 99 hrs 59min 59s in one-second increments
Interval	0 s to 99 hrs 59min 59s in one-second increments
Number of shots	1 to 399 and unlimited shots
Power source	Two AAA 1.5V Lr03 alkaline batteries
Battery life	Approximately two months of continuous shooting with a delay of 5min, an exposure time of 4min 56s and on interval of 5min. User of the illuminate will reduce battery life.
Operating temperature	-20°C up to +50°C (-4° F up to +122°F)
Dimensions	Approximately 155X40X18mm(6.1x1.6x0.7in), excluding projections
Weight	Approximately 80g (without batteries)
Length of cord	Approximately 120 cm

Disposal



Dispose of packaging: For disposal, separate packaging into different types. Cardboard and board must be disposed of as paper and foil must be recycled.



Disposal of old devices: Applicable in the European Union and other European countries with systems for the separate collection of reusable materials. Do not dispose old devices into the household waste! If the Rollei Cable Release is no longer used, every consumer is legally obligated to dispose them separately from the household waste, for example, at a collection site of his community / city district. This ensures that devices are properly recycled and negative effects on the environment are avoided. Therefore electrical and electronic equipment needs to be marked with the shown symbol.

CE Confirmation

The Manufacturer hereby declares that the CE marking was applied to the Rollei Cable Release in accordance with the basic requirements and other relevant provisions of the following CE Directives:

2011/65/EC RoHs Directive
2014/30/EU EMC Directive
2002/96/EG WEEE Directive



The EC Declaration of Conformity can be requested from the address specified on the Warranty card.