

Cautions

Precautions and maintenance

- ③ For indoor use only
- ③ To avoid risk of fire or electric shock, do not expose the unit to moisture or condensation.
- ③ To avoid overheating, do not block the ventilation holes on the back of the Digital Photo Frame.
- ③ Keep the Digital Photo Frame out of direct sunlight.
- ③ Do not dismantle the Digital Photo Frame. There is a risk of electric shock and there are no user-serviceable parts inside. Dismantling the Digital Photo Frame will void your warranty.

Cleaning the LCD Screen

- ③ Treat the screen carefully. Because the screen of the Digital Photo Frame is made of glass and it would easily be broken or scratched.
- ③ If fingerprints or dust accumulate on the LCD screen, we recommend using a soft, non-abrasive cloth such as a camera lens cloth to clean the LCD screen.
- ③ Moisten the cleaning cloth with the cleaning solution and apply the cloth to the screen.

WARNING:

To reduce the risk of fire or electric shock, do not expose this appliance to rain or moisture.

Note: This Device is for private use only and not designed for commercial utilization.

Introduction:

Thank you for your purchase of the Digital Photo Frame. It is designed to allow quick and easy view of photos taken from your digital camera, mobile phone, or from a memory storage card. Please read this User Manual carefully to learn the correct way to use the Digital Photo Frame.

Features:

1. Support picture format: JPEG
2. Support memory card: SD/SDHC/ MMC/MS.
3. USB connection: USB 2.0
4. Auto Slideshow when insert memory card.
5. Built-in Clock and Calendar with slideshow window, Schedule Auto Power On/Off
6. Adjustable slideshow speed and above 8 kinds of transition effects
7. Automatic storage rotation of images when frame is positioned vertically to the left.
8. Adjustable Brightness, Contrast, Saturation.
9. Copy the files to the Built-in Memory and delete the files in the built-in Memory /Card/USB
10. Slideshow Mode: Single window, Two windows, Triple windows and four windows
11. OSD languages: German, English, French, Spanish, Portuguese, Italian, Greek, Czech, Hungarian, Polish, Russian, Danish, Swedish ,Norwegian, Finnish ,Dutch

Packaging Check List:

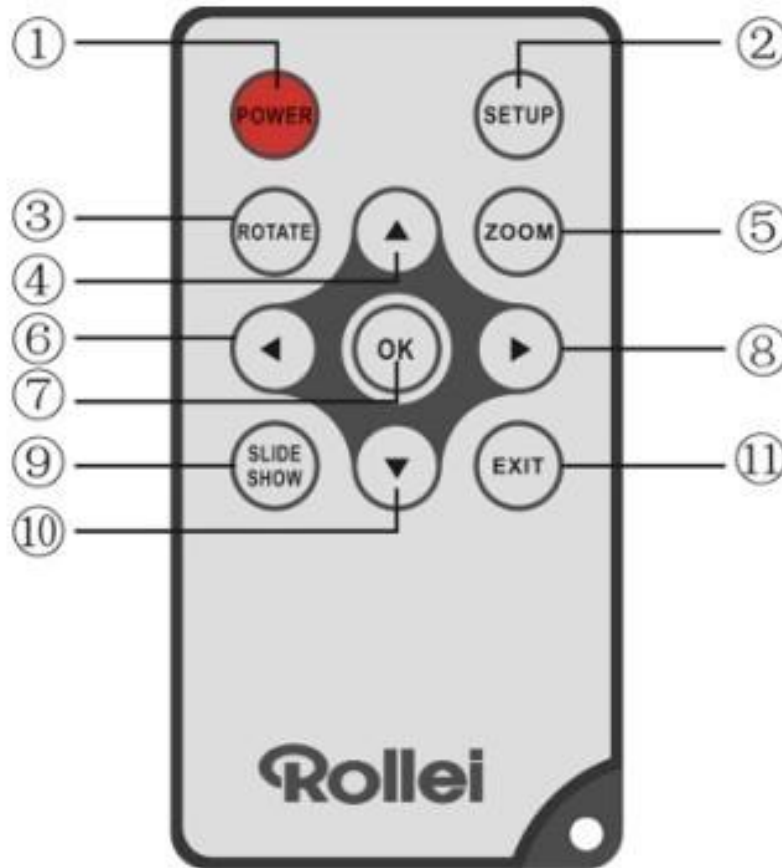
- | | |
|-------------------------------|---------|
| 1. 8 inch digital photo frame | 1 piece |
| 2. AC/DC adapter | 1 piece |
| 3. Remote control | 1 piece |
| 4. Use manual | 1 piece |
| 5. Warranty card | 1 piece |
| 6. Facebook card | 1 piece |
| 7. Bracket | 1 piece |

CONTENTS

1. Product Diagram.....	4
1.1 Remote Control	4
1.2 Back side Buttons	5
1.3 Left Side of Frame.....	5
2. Installing & Replacing the Battery	5
3. Getting Started	5
4. Operating Instruction	6
4.1 Card and USB.....	6
4.2 Photo Mode.....	7
5. Calendar	8
6. File:	8
7. Setup.....	9
8. Stand Instruction	9
9. Technical Specifications	9
10. Troubleshooting Guide	10

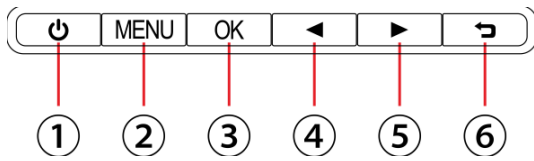
1. Product Diagram

1.1 Remote Control



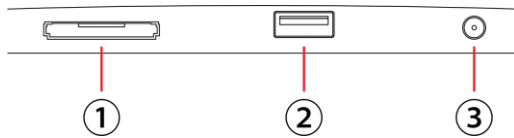
- 1) **POWER** — Switch On/Off.
- 2) **SETUP** — Go to Setup mode.
- 3) **ROTATE** — Counterclockwise 90°In the picture pause mode each time
- 4) **▲** — Functional selection button from the bottom to the top cursor
- 5) **ZOOM** — Change magnification 6 times In the single picture pause mode
- 6) **◀** — Functional selection button from right to left cursor
- 7) **OK** — TO Confirm or Switch Pause /Play Function
- 8) **▶** — Functional selection button from left to right cursor
- 9) **SLIDESHOW** – Start slideshow to view pictures
- 10) **▼** — Functional selection button from the top to the bottom cursor.
- 11) **EXIT**—Return to previous page / menu

1.2 Back Side Buttons



1. Power on/off
2. Menu
3. Play/pause
4. Left
5. Right
6. Return

1.3 Left Side of Frame



1. SD/SDHC /MS/ MMC Card
2. USB Host Port
3. Power cable connector

2. Installing & Replacing the Battery

Place the upside of the remote control down, press down on the ridged area of the battery cover and pull towards you to remove the tray. Place one CR2025 lithium button-cell battery on the tray with the positive “+” side facing you. Reinsert the tray



3. Getting Started

3.1 Put the digital photo frame with installing bracket on a flat position stability, then plug one end of the AC adapter into a standard 110-240V AC electrical outlet and the other end into the DC IN slot on the left side of the frame.

Note: The installing and standing method refer to "Stand Instruction".

3.2 Remove the protective film covering the LCD.

3.3 Remove the plastic battery insulator from the battery compartment and make sure the remote control has a battery inside. Please refer to “Installing & Replacing Battery” if you need a new battery.

3.4 Press the Power Button on the Remote Control to Switch On/Off.

4. Operating Instruction



Power on the unit for the first time it will show the startup logo first, then a interface with a 16-languages selection appears on the screen. Press ▲ ▼ to choose and press **OK** to select the language. The unit will start an auto slideshow with pictures of the internal Memory. It will preferentially play the files from the inserted storage device or the files selected in the Auto start Mode. You can set Auto start Mode in the Setup-Menu.

Note: The 16-languages selection can be recalled after a reset to the default settings. Enter the "Setup" interface and choose "system setup" for default.

4.1 Card and USB

It supports SD /SDHC/MMC/MS and USB 2.0. After inserting a card or USB device, slideshow will play automatically, then press **RETURN** to access to Photo, File, Calendar and Setup. Press **OK** to confirm.



Note:

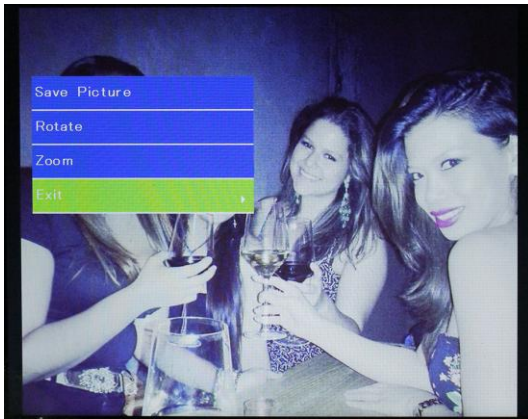
- 1) Make sure there are supported Picture files in the Card or USB device.
- 2) If there are supported picture files in the Card or USB Device, slideshow will play automatically with background music

4.2 Photo Mode



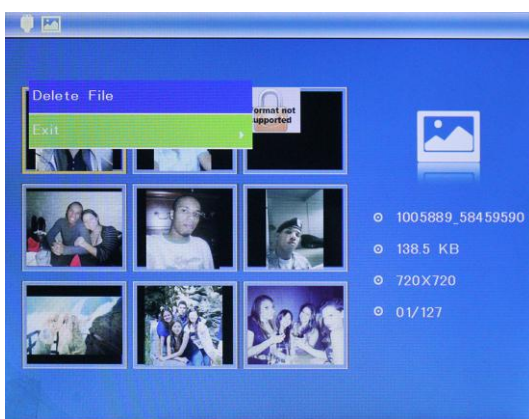
Press **RETURN** to choose Storage Device. Press **“OK”** to enter into the main menu, choose **Photo** and press **OK** to start slideshow , press Return to enter into the 9-Pictures Mode, use **▲ ▼◀ ▶** to choose the picture and press **OK** to play.It will auto slideshow.

Copy & Delete function



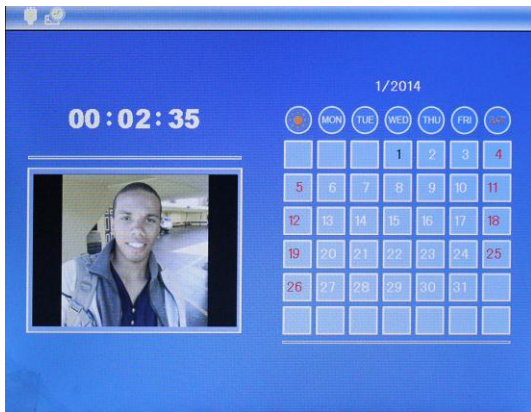
Copy pictures to built-in memory:
In the pause state of single picture, press **SETUP** in the control to enter copy interface, press **OK** to copy the picture to built-in memory.

Note: System will show “Memory Full” if remaining built-in memory size is not enough to store the photo.



Delete pictures on built-in memory or memory card:
In preview mode, use **▲▼◀▶** to select the picture you want to delete, then press **SETUP** to enter the delete interface, press **OK** to confirm.

5. Calendar

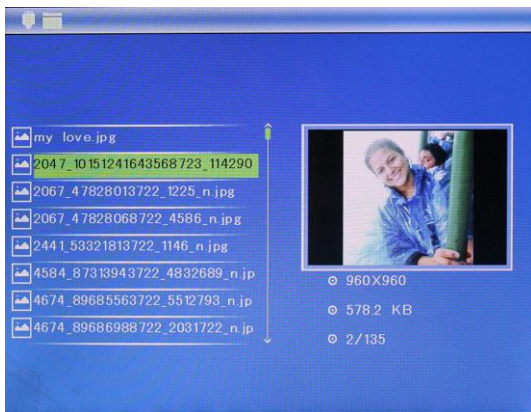


Select **Calendar** in the Main Menu, press **OK** to enter. It will show calendar with a window on the left with slideshow. Supported files must be stored in the selected storage device.

Adjust date with ▲▼◀▶.

If you want to set the date/time, press **Setup**, You can enter into the **Calendar Setup** menu, press **OK** to enter the sub-menu items. Press ◀▶ to set the Value and press ▲▼ to confirm. The set time will be shown in the Calendar Interface.

6. File:

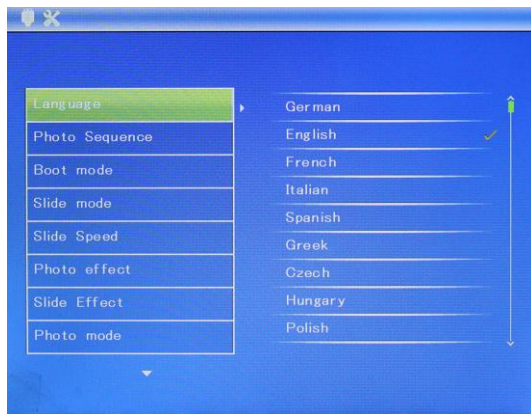


Select **File** in the main menu and press **OK** to enter. You can browse all files on your selected storage device. Press ▲▼ to choose the file and press **OK** to open the file or folder.

Delete function

Use the direction buttons to the desired file. Then press **SETUP** in the control to enter delete interface, select the desired function and confirm your selection with **OK**. Note: Files can be copied to the internal memory.

7. Setup

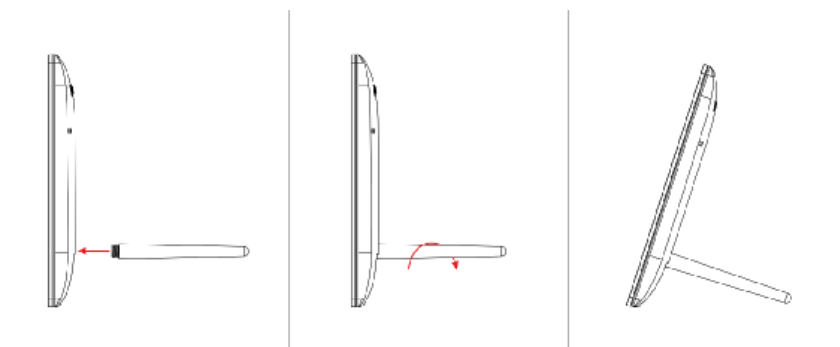


Select **Setup** in the main menu, press **OK** to enter the Setup interface and press **▲▼** to highlight the main item and press **OK** to enter the sub-menu items. Press **◀▶** to set the Value and press **▲▼** to Confirm. Note: After you set an item and enter into the next item, the set mode/data will auto saved.

You could select language, set time, choose picture mode/music mode/video mode and so on.

8. Stand Instruction

Insert the bracket into the slot of the digital photo frame and rotate the bracket clockwise. Please make sure the stand is locked before you put it on the table steadily. Please refer to the illustration showing below.



9. Technical Specifications

- ③ **Adapter:** Input: AC 100-240V 50/60HZ Output: DC 5V/1A
- ③ **Picture Format:** JPEG
- ③ **Memory Cards:** SD /SDHC/MMC/MS
- ③ **USB:** USB Host
- ③ **Screen Parameter:**
 - Screen Size: 8 inch TFT
 - Resolution: 1024*768 Pixel
 - Aspect Ratio: 4:3
 - Brightness: 200-300cd/m²
 - Contrast: 250:1
 - Response Time: 20ms
 - Viewing Angle: 60°(left/right/vertical), 40°(horizontal)
 - Working Temperature: 0°C~40°C, Humidity: 10-85%

10. Troubleshooting Guide

If you are having problems with your player, please consult both this guide and manual. If you need further assistance, please contact Technical Support.

- ③ **No power:**
Please check whether the plug is inserted correctly.
- ③ **Remote control no function:**
Please check whether the battery has power (the battery can be used for half a year in normal conditions). Replace with new battery if necessary.
- ③ **Can not read the CARD or USB:**
Please confirm whether there is storage in the card or USB device.
Empty devices cannot be read.
- ③ **Can not play the file:**
Please confirm if the file format is compatible with the player.
- ③ **Display too bright or too dark:**
Please adjust the brightness or contrast in the setup menu.
- ③ **The color is light or no color:**
Please adjust the color and contrast setup.
- ③ **No sound:**
Please check whether the volume is correct and the player is not in Mute mode.