

Cautions

Precautions and maintenance

- ③ For indoor use only
- ③ To avoid risk of fire or electric shock, do not expose the unit to moisture or condensation.
- ③ To avoid overheating, do not block the ventilation holes on the back of the Digital Photo Frame.
- ③ Keep the Digital Photo Frame out of direct sunlight.
- ③ Do not dismantle the Digital Photo Frame. There is a risk of electric shock and there are no user-serviceable parts inside. Dismantling the Digital Photo Frame will void your warranty.

Cleaning the LCD Screen

- ③ Treat the screen carefully. Because the screen of the Digital Photo Frame is made of glass and it would easily be broken or scratched.
- ③ If fingerprints or dust accumulate on the LCD screen, we recommend using a soft, non-abrasive cloth such as a camera lens cloth to clean the LCD screen.
- ③ Moisten the cleaning cloth with the cleaning solution and apply the cloth to the screen.

WARNING:

To reduce the risk of fire or electric shock, do not expose this appliance to rain or moisture

Note: This Device is for private use only and not designed for commercial utilization.

Introduction:

Thank you for the purchase of the Digital Photo Frame. It is designed to allow quick and easy view of photos taken from your digital camera, mobile phone, or from a memory storage card. Please read this User Manual carefully to learn the correct way to use the Digital Photo Frame.

Features:

1. Supported picture format: JPEG
2. Supported audio format: Mp3& WMA
3. Supported video format: MPEG-1, MPEG-2, MPEG-4 (Divx4.0,Divx5.0), Xvid, AVI and M-JPEG
4. Supported Full HD MOVIES:720P/820P/1080P & RMVB& H.264
5. Supported memory card: SD/SDHC/MMC/MS
6. USB connection: Mini USB & USB 2.0
7. Build in Memory:4GB support PC connection and file storage
8. Auto file play when inserting Memory Card
9. Picture & Music: Slideshow with background music
10. Support viewing pictures in thumbnail mode
11. Schedule auto on/off.
12. Image-display mode: slideshow, preview, zoom, rotate function.
13. Adjustable slideshow speed
14. Copy files to Memory and delete files in the Cards & Memory
15. Built-in stereo speaker (2x2W) and earphone Jack
16. Wall mountable
17. OSD languages: German, English, French, Spanish, Portuguese, Italian, Greek, Czech, Hungarian, Polish, Russian, Danish, Swedish, Norwegian, Finnish ,Dutch

Packaging Check List:

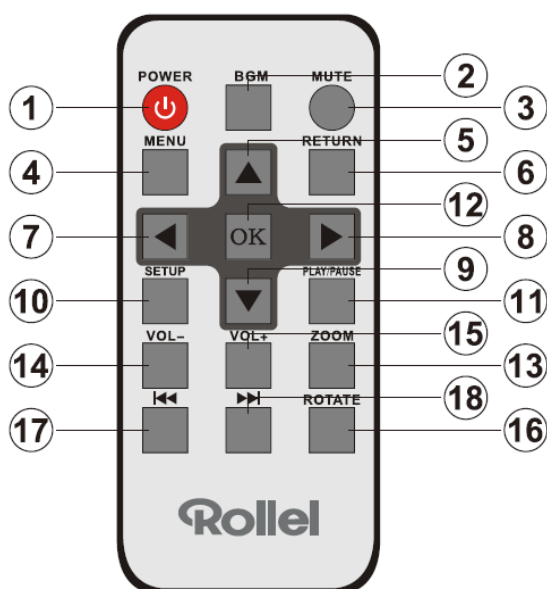
- | | |
|----------------------------------|---------|
| 1. 17.3 inch digital photo frame | 1 piece |
| 2. AC/DC adaptor | 1 piece |
| 3. Remote control | 1 piece |
| 4. User manual | 1 piece |
| 5. Warranty card | 1 piece |
| 6. Facebook card | 1 piece |
| 7. Bracket | 1 piece |
| 8. Long USB Cable | 1 piece |

CONTENTS

1. Product Diagram	4
1.1 Remote Control	4
1.2 Back side Buttons	5
1.3 Left side of the frame	5
2. Installing & Replacing the Battery	5
3. Getting Started	5
4. Operating Instruction	6
4.1 Card and USB	6
4.2 Picture Mode	6
4.3 Music Mode	7
4.4 Video Mode	7
5. Calendar	7
6. File	7
7. Setting	8
8. Stand Instruction	8
9. PC Connection	9
10. Technical Specifications	9
11. Troubleshooting Guide	9
12. Conformity Declaration	10

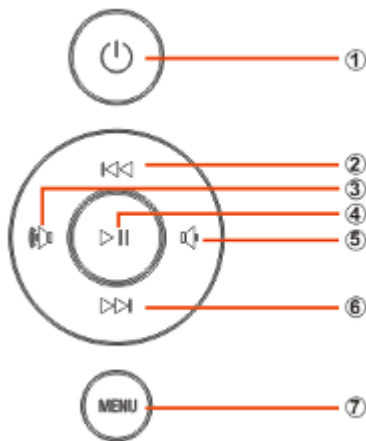
1. Product Diagram

1.1 Remote Control



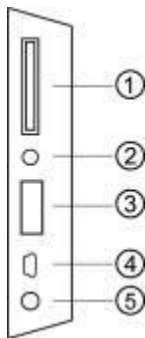
- 1) **POWER** Switch On/Off
- 2) **BGM** – Press BGM button to play the background music in slideshow mode
- 3) **MUTE** – Press Mute button to switch of the sound temporarily.
- 4) **MENU** – Enter Main Menu interface.
- 5) – Functional selection button from the bottom to the top cursor.
- 6) **RETURN** – Return to previous page.
- 7) – Functional selection button from right to left cursor
- 8) – Functional selection button from left to right cursor
- 9) – Functional selection button from the top to the bottom cursor.
- 10) **SETUP** – Go directly to Setup mode
- 11) **Play/Pause** – In the playing mode, press this button, it will pause; repress this button, it will play again.
- 12) **OK** – Press to confirm.
- 13) **ZOOM** – In the pause state of single picture, Press ZOOM to magnify picture display size.
- 14 /15) **VOL +/-** – Turn up/down the volume
- 16) **ROTATE** – In the pause state of single picture, Press this button to revolve the picture 90°in clockwise direction each time.
- 17) – Move back to previous music or video file.
- 18) – Move forward to next music or video file.

1.2 Back side Buttons



1. Power on/off
2. Up
3. Vol +/Right
4. Play/Pause/OK
5. Vol -/ Left
6. Down
7. Menu

1.3 Left side of the frame



1. SD/MMC/MS Card
2. Earphone Jack
3. USB
4. Mini USB
5. DC in

2. Installing & Replacing the Battery

Place the upside of the remote control down, press down on the ridged area of the battery cover and pull towards you to remove the tray. Place one CR2025 lithium button-cell battery on the tray with the positive “+” side facing you. Reinsert the tray.



3. Getting Started

- 3.1. Put the digital photo frame with installing bracket on a flat position steadily, then plug one end of the AC adapter into a standard 110-240V AC electrical outlet and the other end into the DC IN slot on the left side of the frame.
- 3.2. Slowly remove the protective film covering on the Screen.
- 3.3. Remove the plastic battery insulator from the battery compartment and make sure the remote control has a battery inside. Please refer to “Installing & Replacing Battery” if you need a new battery.
- 3.4. Press the power button on the backboard or press the Power Button on the Remote Control to Switch On/Off.

4. Operating Instruction



Power on the unit for the first time it will show the startup logo first and a interface with a 16-languages selection appears on the screen. Press **▲▼** to choose and press **OK** to select the language. It will preferentially play the files from the inserted storage device or the files selected in the Auto start Mode.

You can set Auto start Mode in the Setup-Menu.

Note: The 16-languages selection can be recalled after a reset to the default settings. Enter the **Setup** interface and choose **system setup** for default.

4.1 Card and USB

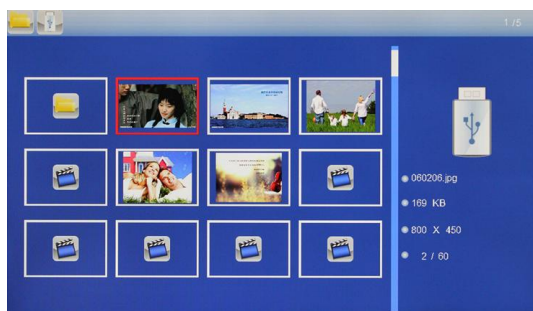
The Frame supports **SD/SDHC/MMC/MS** Cards and USB 2.0. After inserting a card or USB device, the frame plays automatically the file format you selected in the Auto start-Menu. Press **Return** twice to access to **Photo, Music, Video, Calendar, File** and **Setting**. Press **OK** to confirm.



Note:

- 1) Make sure there are supported Picture-, Music- or Video-files on the Card or USB device.
- 2) If there are supported picture and music files in the Card or USB Device, the frame will start the playback automatically.

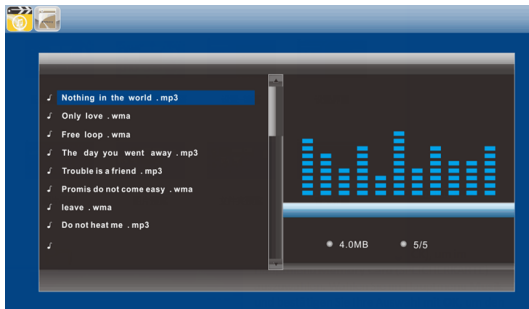
4.2 Picture Mode



Press **Return** to select the Storage Device. Press **OK** to open the main menu, select **Photo** and press **OK** to start slideshow. Press **Return** to open the Preview Mode and use **◀▶** to select the desired picture. Press **OK** to confirm your selection. To play back the slideshow with background Music, the Music must be stored in the same memory device! You can use **Vol+/Vol-** to turn up /down the volume, you can also use **◀▶** to go to the previous/next background music.

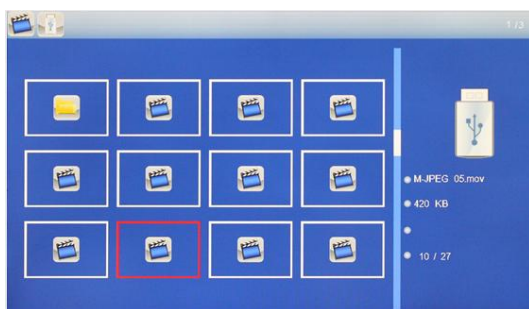
Press **OK** to go the function toolbars and confirm your selection with **OK**.

4.3 Music Mode



Press **Return** to select **Memory Card** in the main menu. Select **Music Icon** and press **OK** to enter. Press **OK** to Play/Pause. Press **VOL+/-** to turn up/ down the volume. With **◀▶** you can enter the previous or next music playing directly.

4.4 Video Mode



Press **Return** to select the Storage Device. Press **OK** to enter the main menu. Select the Movie Icon and press **OK** to enter. Press **Return** to Select the video from the playlist, then press **OK** to Play. Press **VOL+/-** to turn up/ down the volume.

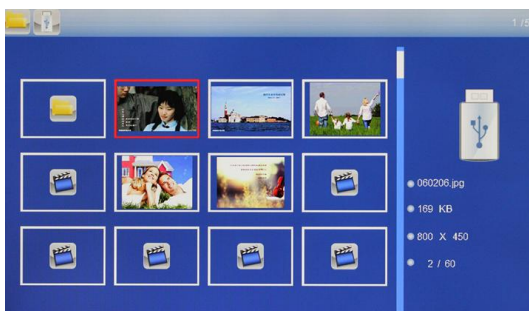
Press **OK** to go the function toolbars and confirm your selection with **OK**.

5. Calendar



Select **Calendar** in the Main Menu, press **OK** to enter. The calendar will be shown.

6. File



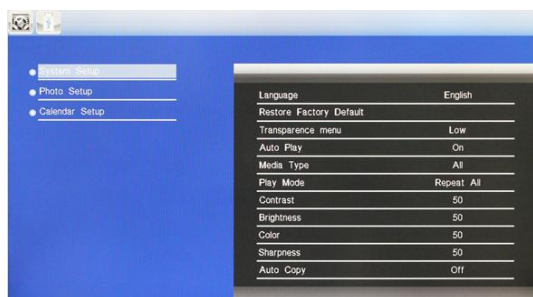
Select **File** in the main menu and press **OK** to enter. You can browse all files on your selected storage device. Press **◀▶** to choose the file and press **OK** to open the file or folder.

Copy and Delete function



Press **▲** to select the desired files, then press **OK**, a sub-menu for Copy/Delete Operation will be shown on the screen. Confirm with **OK**.

7. Setting

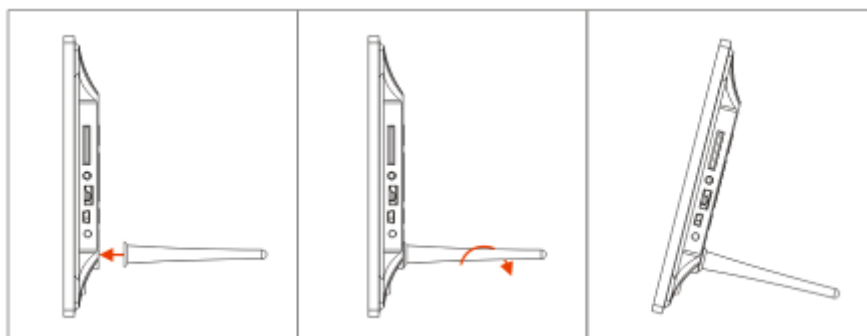


Select **Setting** in the main menu. Press **OK** to enter the **Setting** interface and press **▲▼** to highlight your selection. Press **OK** to enter the sub-menu items. Press **◀▶** to set the Value. You could select language, set time, choose picture mode/music mode/video mode and so on.

Auto power on & off function Remarks:

1. In order to activate the auto power ON & OFF function, please check if the setting frequency is set correct. If set to OFF, the function is not activated.
2. After the time setting for auto power on/off, you must return to the main menu or other functions of the frame to activate the Auto Power ON & OFF.
3. A reminder for the Auto OFF appears 1 Minute before the frame switches off. Press any key to cancel the Power OFF function.
4. If Power OFF is activated and frame switches off at the selected time, the frame goes into Sleep-mode. To switch the frame on again, you need to press the "ON" Button on the Remote or the rear side off the frame two times.

8. Stand Instruction

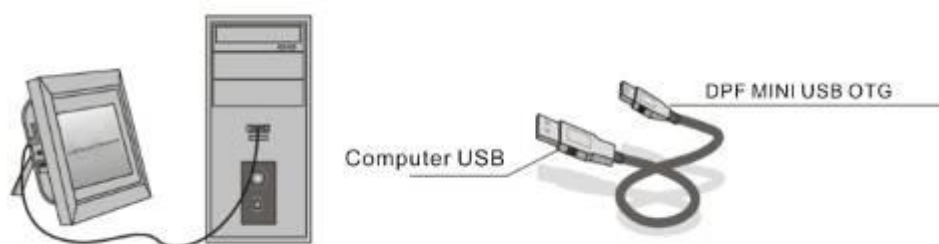


Insert the bracket into the slot of the digital photo frame and rotate the bracket clockwise. Please make sure the stand is locked before you put it on the table steadily. Please refer to the illustration showing below.

9. PC Connection

You can connect the unit to the external equipment by using USB Cable for file copy & delete or edit Operation.

- A. Please turn on the digital photo frame, then connect it with the USB cable to your PC. The Frame supports Windows 2000/XP/Vista/7/8.
- B. The unit will be automatically detected and it will display "PC Connecting" on the screen. You can copy, delete or edit files between the internal memory and other storage devices. You need to restart the digital photo frame after you finished the operation.



NOTE: Never disconnect the USB cable during any operational process. Doing so may damage your DPF. Press Safely Remove Hardware Icon on the computer to disconnect the PC-Connection.

10. Technical Specifications

- ③ **Adapter:** Input AC 100-240V 50/60HZ Output DC 9V/1.5A
- ③ **Picture Format:** JPEG
- ③ **Audio Format:** MP3& WMA
- ③ **Video formats:** MPEG-1 , MPEG-2, MPEG-4,M-JPEG and AVI&H.264
- ③ **Supported Full HD MOVIES:** 720P/820P/1080P & RMVB& H.264
- ③ **Memory Cards:** SD/SDHC/MMC/MS
- ③ **USB:** USB Host, Mini USB (connected with the long USB Cable)
- ③ **Screen Parameter:**
 - Screen Size: 17.3 inch TFT
 - Resolution : 1920*1080 Pixels
 - Contrast: 400-500:1
 - Aspect Ratio: 16:9
 - Brightness: 300-400cd/ m²
 - Response Time: 20ms
 - Viewing Angle: 60°(left/right/vertical), 40°(horizontal)
 - Working Temperature: 0 °C ~ 40 °C, Humidity: 10-85%

11. Troubleshooting Guide

If you are having problems with your player, please consult this manual. If you need further assistance, please contact the Technical Support.

- ③ **No power:**
Please check whether the AC-Adaptor is inserted correctly.
- ③ **Remote control has no function:**
Please check whether the battery has power (the battery can be used for half a year in normal conditions). Replace with a new battery if necessary.
- ③ **Cannot read the Memory Card or USB-Device:**
Please confirm there are supported files on your memory card or USB device.
Empty devices cannot be read.
- ③ **Cannot play the file:**
Please confirm if the file format is compatible with the player.
- ③ **Display too bright or too dark:**
Please adjust the brightness or contrast in the setup menu.
- ③ **The color is light or no color:**
Please adjust the color and contrast setup.
- ③ **No sound:**
Please check whether the volume is correct and the player is not in Mute mode.

12. Conformity Declaration

The Manufacturer hereby declares that the CE marking was applied to the

Rollei Pissarro DPF 170 in accordance with the basic requirements and other relevant

provisions of the following CE Directives:

2011/65/EC RoHs Directive

2004/108/EC Low Voltage Directive

1999/5/EG R&TTE Directive

2006/95/EEC LVD Directive

2009/125/EG EuP Directive

2002/96/EG WEEE Directive



The EC Declaration of Conformity can be requested from the address specified on the Warranty card.