

## Cautions

### Precautions and maintenance

- For indoor use only
- To avoid risk of fire or electric shock, do not expose the unit to moisture or condensation.
- To avoid overheating, do not block the ventilation holes on the back of the Digital Photo Frame.
- Keep the Digital Photo Frame out of direct sunlight.
- Do not dismantle the Digital Photo Frame. There is a risk of electric shock and there are no user-serviceable parts inside. Dismantling the Digital Photo Frame will void your warranty.

### Cleaning the LCD Screen

- Treat the screen carefully. Because the screen of the Digital Photo Frame is made of glass and it would easily be broken or scratched.
- If fingerprints or dust accumulate on the LCD screen, we recommend using a soft, non-abrasive cloth such as a camera lens cloth to clean the LCD screen.
- Moisten the cleaning cloth with the cleaning solution and apply the cloth to the screen.

#### **WARNING:**

To reduce the risk of fire or electric shock, do not expose this appliance to rain or moisture

Note: This Device is for private use only and not designed for commercial utilization.

### Introduction:

Thank you for the purchase of the Digital Photo Frame. It is designed to allow quick and easy view of photos taken from your digital camera, mobile phone, or from a memory storage card. Please read this User Manual carefully to learn the correct way to use the Digital Photo Frame.

## Features :

1. Supported picture format: JPEG
2. Supported audio format: Mp3& WMA
3. Supported video format: MPEG1, MPEG2, MPEG4 (Divx4.0,Divx5.0) , Xvid , AVI and M-JPEG
4. Supported Full HD MOVIES:720P/820P/1080P & RMVB& H.264
5. Supported memory card: SD/SDHC/MMC/MS
6. USB connection: Mini USB & USB 2.0
7. Build in Memory:4GB support PC connection and file storage
8. Auto Video play when inserting Memory Card
9. Picture & Music: Slideshow with background music
- 10.Support viewing pictures in thumbnail mode
- 11.Built-in Clock and calendar with slideshow Window, schedule auto on/off.
- 12.Image-display mode: slideshow, preview, zoom, rotate function.
- 13.Adjustable slideshow speed
- 14.Copy files to Memory and delete files in the Cards & Memory
- 15.Built-in stereo speaker (2x2W) and earphone Jack
- 16.Wall mountable
- 17.OSD languages: German, English, French, Spanish, Portuguese, Italian, Greek, Czech, Hungarian, Polish, Russian, Danish, Swedish ,Norwegian, Finnish ,Dutch

## Packaging Check List:

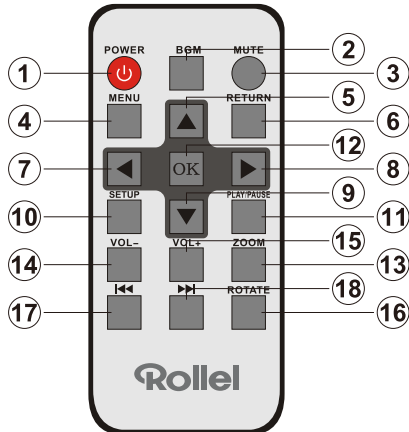
- |                                  |         |
|----------------------------------|---------|
| 1. 13.3 inch digital photo frame | 1 piece |
| 2. AC/DC adaptor                 | 1 piece |
| 3. Remote control                | 1 piece |
| 4. User manual                   | 1 piece |
| 5. Warranty card                 | 1 piece |
| 6. Facebook card                 | 1 piece |
| 7. Bracket                       | 1 piece |
| 8. Long USB Cable                | 1 piece |

# CONTENTS

1. Product Diagram .....	4
1.1 Remote Control .....	4
1.2 Back Side Buttons .....	5
1.3 Left Side of the Frame .....	5
2. Installing & Replacing the Battery .....	5
3. Getting Started .....	5
4. Operating Instruction .....	6
4.1 Card and USB .....	6
4.2 Picture Mode .....	7
4.3 Music Mode .....	7
4.4 Video Mode .....	8
5. Calendar .....	8
6. File (Copy and Delete) .....	8
7. Setting .....	9
8. Stand Instruction .....	9
9. PC Connection .....	9
10. Technical Specifications .....	10
11. Troubleshooting Guide .....	10

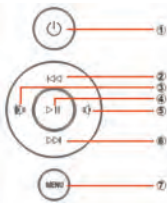
# 1. Product Diagram

## 1.1 Remote Control



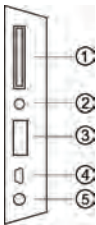
- (1) **POWER** – Switch On/Off
- (2) **BGM** – Press BGM button to play the background music in slideshowmode
- (3) **MUTE** – Press Mute button to switch of the sound temporarily.
- (4) **MENU** – Enter Main Menu interface.
- (5) **▲** – Functional selection button from the bottom to the top cursor.
- (6) **RETURN** – Return to previous page.
- (7) **◀** – Functional selection button from right to left cursor
- (8) **▶** – Functional selection button from left to right cursor
- (9) **▼** – Functional selection button from the top to the bottom cursor.
- (10) **SETUP** – Go directly to Setup mode or show the small Operation interface,
- (11) **PLAY/PAUSE** – In the playing mode, press this button, it will pause; repress this button, it will play again.
- (12) **OK** – Press to confirm. Play/pause: In the playing mode, press this button, it will pause; repress this button, it will play again.
- (13) **ZOOM** – In the pause state of single picture, press ZOOM to magnify picture display size.
- (14 /15) **VOL +/-** – Turn up/down the volume.
- (16) **ROTATE** – In the pause state of single picture, press this button to revolve the picture 90° in clockwise direction each time.
- (17) **◀◀** – Move back to previous music or video file.
- (18) **▶▶** – Move forward to next music or video file.

## 1.2 Back side Buttons



1. Power on/off
2. Up
3. Vol +/Right
4. Play/Pause/OK
5. Vol -/ Left
6. Down
7. Menu

## 1.3 Left side of the frame



1. SD/MMC/MS Card
2. Earphone Jack
3. USB
4. Mini USB
5. DC in

## 2. Installing & Replacing the Battery

Place the upside of the remote control down, press down on the ridged area of the battery cover and pull towards you to remove the tray. Place one CR2025 lithium button-cell battery on the tray with the positive “+” side facing you. Reinsert the tray



## 3. Getting Started

3.1. Put the digital photo frame with installing bracket on a flat position steadily, then plug one end of the AC adapter into a standard 110-240V AC electrical outlet and the other end into the DC IN slot on the left side of the frame.

3.2. Slowly remove the protective film covering on the Screen.

3.3. Remove the plastic battery insulator from the battery compartment and make sure the remote control has a battery inside. Please refer to “Installing & Replacing Battery” if you need a new battery.

3.4. Press the power button on the backboard for 3 -5 seconds or press the Power Button on the Remote Control to Switch On/Off.

#### 4. Operating Instruction

When the frame is switched on for the very first time, a menu for the selection of the default language appears. Please select the desired language and confirm with the "OK" Button. To open the "Language-Selection" again, please use the "Reset" Function in the Menu "Set Up".

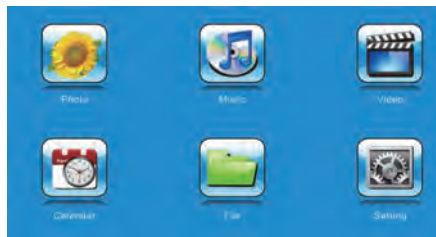
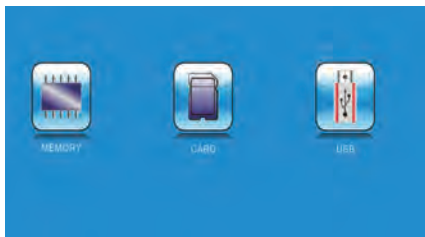


Power on the unit for the first time it will show the startup logo first and a interface with a 16-languages selection appears on the screen. Press ▲▼ to choose and press **OK** to select the language. The unit will start an auto video from the internal Memory. It will preferentially play the files from the inserted storage device or the files selected in the Auto start Mode. You can set Auto start Mode in the Setup-Menu.

**Note:** The 16-languages selection can be recalled after a reset to the default settings. Enter the "Setup" interface and choose "system setup" for default.

#### 4.1 Card and USB

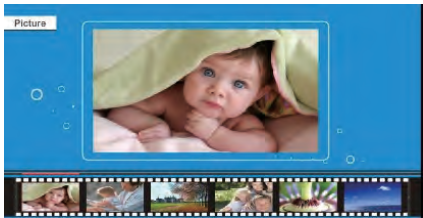
The Frame supports **SD/SDHC/MMC/MS** Cards and USB 2.0. After inserting a card or USB device, the frame plays automatically the file format you selected in the Autostart-Menu. Press **Return** twice to access to **Photo, Music, Video, Calendar, File** and **Setting**. Press **OK** to confirm.



**Note:** 1) Make sure there are supported Picture-, Music- or Video-files on the Card or USB device.

2) If there are supported picture and music files in the Card or USB Device, the frame will start the playback automatically.

## 4.2 Picture Mode



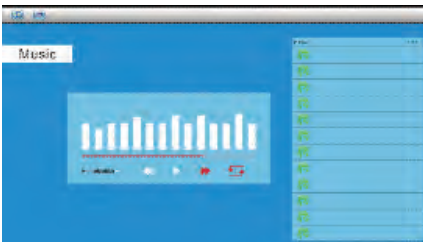
Press **Return** to select the Storage Device. Press "**OK**" to open the main menu, select **Photo** and press **OK** to start slideshow. Press **Return** to open the Browse mode and use **▲▼** to select the desired function. Press **OK** to confirm your selection. To play back the slideshow with background Music, the Music must be stored in the same memory device! You can use **Vol+ / Vol-** to turn up /down the volume, you can also use **◀▶** to go to the previous/next background music and picture.

The functions in the Browse mode from left to right as follows:



- 1.: In single picture mode, press to revolve the picture 90° in clockwise every time
- 2.: In single picture mode, press to magnify picture display size.
- 3: Previous picture
- 4: Next picture
- 5: Start slideshow
- 6: Delete File
- 7: Copy File to internal Memory
- 8: Show File Information
- 9: Press to access to the seven-picture mode, use **◀▶** to choose the picture .

## 4.3 Music Mode



Press **Return** to select "**Memory Card**" in the main menu. Select **Music** Icon and press **OK** to enter, press **Return** to select the music in the playlist. Press **OK** to Play/Pause. Press **VOL+/-** to turn up/ down the volume. With **◀▶** you can enter the previous or next music playing directly.

When the left side interface is highlighted, you can select the desired function from the function toolbars and confirm your selection with **OK**.

## 4.4 Video Mode



Press **Return** to select the Storage Device. Press "**OK**" to enter the main menu. Select the Movie Icon and press **OK** to enter. Press **Return** to select the video from the playlist, then press **OK** to Play. Press **VOL+/-** to turn up/down the volume.

During Video playback press ◀ or ▶ for fast forward and fast backward. Press ⏸ to pause/Play  
Press ◀◀ ▶▶ to start the playback of the previous or next video.

## 5. Calendar

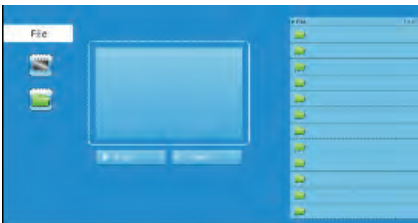


Select **Calendar** in the Main Menu, press **OK** to enter. The calendar will be shown on the Right side of the screen. On the Left side a slideshow will start. The supported **Picture** files must be stored in the selected storage device.

Adjust Year with ▼▲

Adjust Month with ◀▶

## 6. File



Select **File** in the main menu and press **OK** to enter. You can browse all files on your selected storage device. Press ▼ or ▲ to choose the file and press **OK** to open the file or folder.

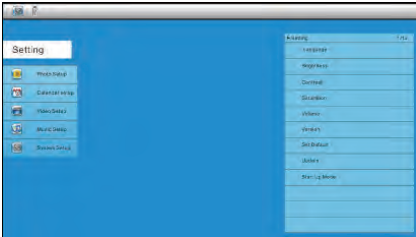
### Copy and Delete function

Use ◀ to highlight the file in right interface. The highlighted file will be displayed in the left window. Press ◀▶ to select the desired operation (Copy or delete). A Sub-Menu for Copy/Delete Operation will be shown on the screen. Confirm with **OK**.

**Note:** Files can only be copied to the internal memory.



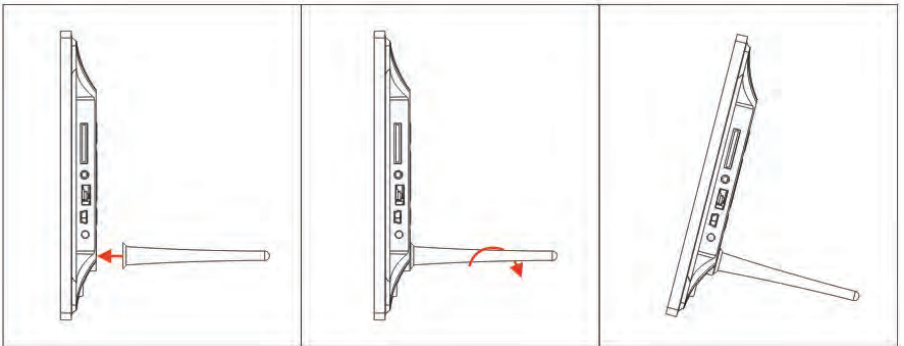
## 7. Setting



Select **Setting** in the main menu. Press **OK** to enter the **Setting** interface and press **▼▲** to highlight your selection. Press **OK** to enter the sub-menu items. Press **◀▶** to set the Value.

## 8. Stand Instruction

Insert the bracket into the slot of the digital photo frame and rotate the bracket clockwise. Please make sure the stand is locked before you put it on the table steadily. Please refer to the illustration showing below.



## 9. PC Connection

You can connect the unit to the external equipment by using USB Cable for file copy & delete or edit Operation.

A. Please turn on the digital photo frame, then connect it with the USB cable to your PC. The Frame supports Windows 2000/XP/Vista/7/8.

B. The unit will be automatically detected and it will display "PC Connecting" on the screen. You can copy, delete or edit files between the internal memory and other storage devices. You need to restart the digital photo frame after you finished the operation.



NOTE: Never disconnect the USB cable during any operational process. Doing so may damage your DPF. Press Safely Remove Hardware Icon on the computer to disconnect the PC-Connection.

## 10. Technical Specifications

- **Adapter:** Input AC 100-240V 50/60HZ Output DC 9V/1.5A
- **Picture Format:** JPEG
- **Audio Format:** MP3& WMA
- **Video formats:** MPEG1 , MPEG2, MPEG4,M-JPEG and AVI&H.264
- **Memory Cards:** SD/SDHC/MMC/MS
- **USB:**USB Host, Mini USB (connected with the long USB Cable)
- **Screen Parameter:**
  - Screen Size: 13.3 inch TFT
  - Resolution : 1366\*768 Pixels
  - Contrast: 200-300:1
  - Aspect Ratio: 16:9
  - Brightness: 200-300cd/ m2
  - Response Time: 20ms
  - Viewing Angle: 60°(left/right/vertical), 40°(horizontal)
  - Working Temperature: 0 C~40 C , Humidity: 10-85%

## 11.Troubleshooting Guide

If you are having problems with your player, please consult this manual. If you need further assistance, please contact the Technical Support.

- **No power:**

Please check whether the AC-Adaptor is inserted correctly.

- **Remote control has no function:**

Please check whether the battery has power (the battery can be used for half a year in normal conditions). Replace with a new battery if necessary.

- **Cannot read the Memory Card or USB-Device:**

Please confirm there are supported files on your memory card or USB device.

Empty devices cannot be read.

- **Cannot play the file:**

Please confirm if the file format is compatible with the player.

- **Display too bright or too dark:**

Please adjust the brightness or contrast in the setup menu.

- **The color is light or no color:**

Please adjust the color and contrast setup.

- **No sound:**

Please check whether the volume is correct and the player is not in Mute mode