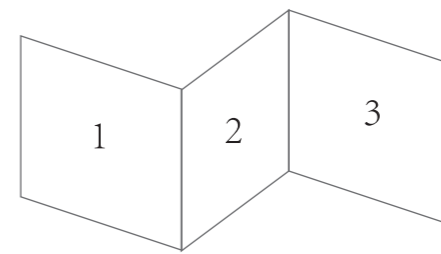


1.上下对折



2.在3折，保持1在最上面

中英文正反印刷

100mm

145mm

besview®

T3
TELEPROMPTER

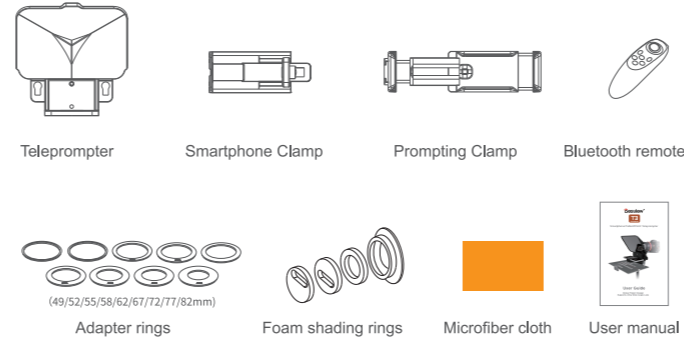
Smartphone/Tablet/DSLR Teleprompter



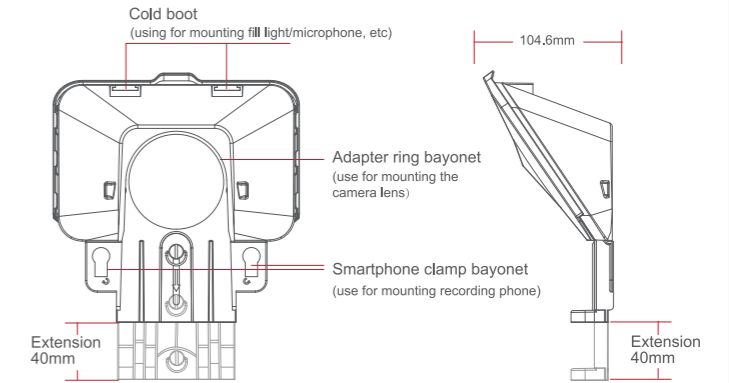
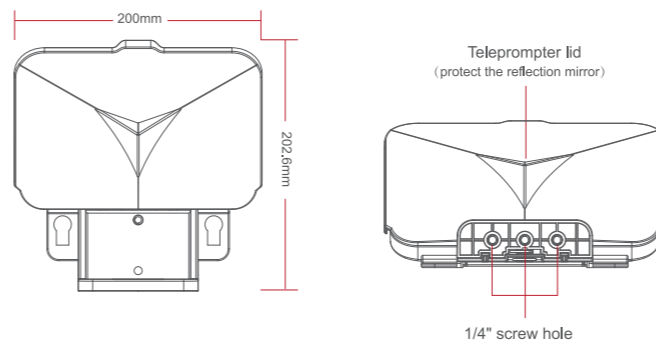
User Guide

Global Patent Design
Supports Ultra Wide Angle Lens

■ Packing List



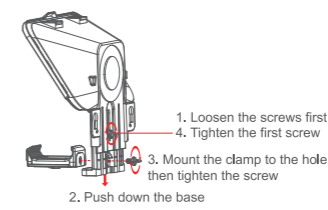
■ Size



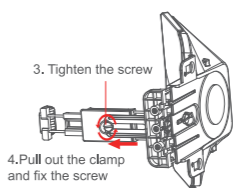
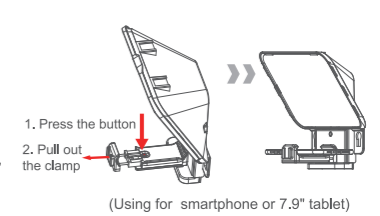
■ Installation Methods

1. Smartphone live broadcast

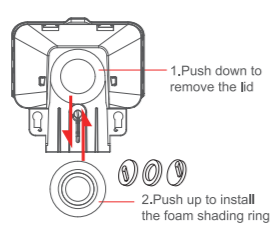
① Front clamp installation



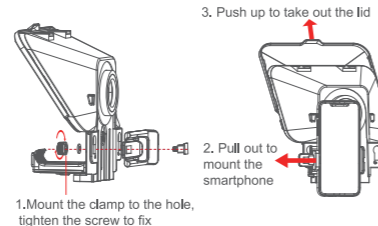
② Teleprompter installation



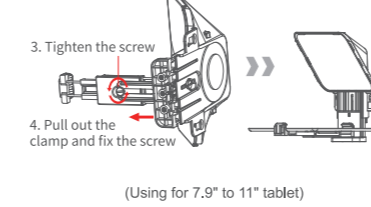
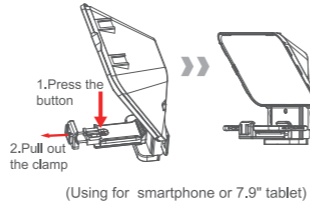
③ Foam shading ring installation



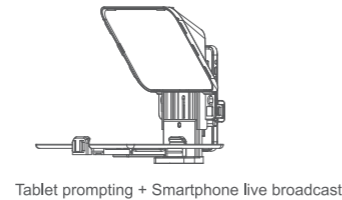
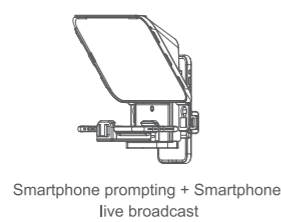
④ Shooting phone clamp installation



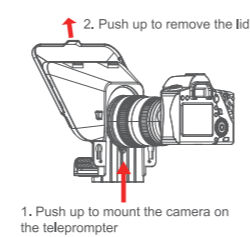
③ Teleprompter installation



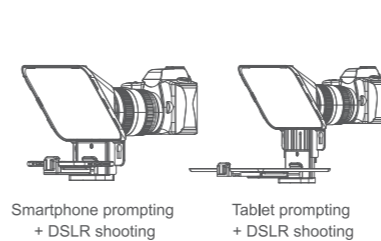
⑤ Installed



④ Camera Installation



⑤ Installed



■ Bluetooth remote



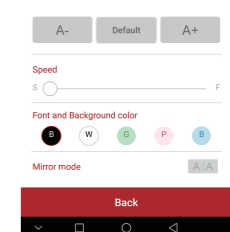
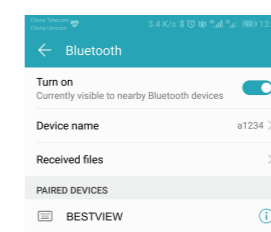
NOTICE: Due to different brand phone, some smartphone function will be a little different after connected the remote

Remote use instruction

- power on: Keep press , until the lights on (about 2 seconds) .
- power off: Keep press , until the lights off (about 5seconds) .

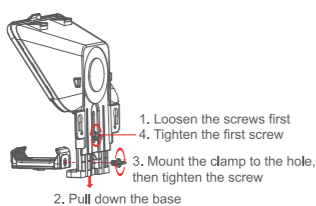
Notice: if power on without connect anything, it will power off after 5 minutes; if connected the phone, it will power off after 30 minutes

3. Connect: After power on, LED lights on, auto into compare mode, select BESTVIEW to connect after connected LED lights off Next time it will connect automatically. If you want connect new device, on power off mode, keep press longer than 8seconds, lights flicker, then into the compare mode.

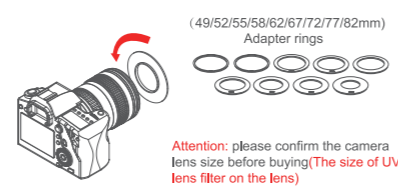


2. DSLR Recording

① Front clamp Installation

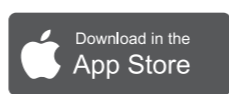


② Adapter ring installation



Attention: please confirm the camera lens size before buying (The size of UV lens filter on the lens)

■ APP Download



IOS user download on APP store using "BESTVIEW"



Android user download on Google play using "BESTVIEW"