

Rollei

CarDVR-318



USER GUIDE

FOR GERMAN | ENGLISH | FRENCH | SPANISH | ITALIAN | DUTCH

www.rollei.de

Contents

About this Guide	3
Recycling Information	3
Conformity	4
Battery Warning	4
Notes on Installation	5
Caution	6
1 Introduction	7
1.1 Features	7
1.2 Package Contents	7
1.3 Product Overview	8
2 Getting Started	9
2.1 Storage Media	9
2.1.1 Insert the Memory Card	9
2.1.2 Remove the Memory Card	9
2.2 Installing in Vehicles	10
2.2.1 Mount the Camcorder to Windshield	10
2.2.2 Adjust the Camcorder	10
2.3 Connecting to Power	11
2.4 LED Indicator	13
2.5 Powering the Camcorder On / Off	14
2.5.1 Auto Power On/Off	14
2.5.2 Manual Power On/Off and Reset	14
2.5.2.1 Manual Power On	14
2.5.2.2 Manual Power Off	14
2.5.2.3 Reset the Camcorder	14
2.6 Initial Settings	15
2.6.1 Set Time Zone	15
2.6.2 Set the Date / Time	17

3	Using the Drive Recorder	18
3.1	Automatic Record	18
3.1.1	Resolution	18
3.1.2	The Recording Screen.....	19
3.1.3	Emergency Recording	21
3.2	Add Speed Point	22
3.3	Picture in Video.....	22
3.4	Parking Mode.....	23
3.5	Collision Detection	25
3.6	Function Chart	26
3.7	File Playback	27
3.7.1	Playing Videos.....	27
3.7.2	Viewing Pictures	28
3.7.3	Playback Screen	29
3.8	Deleting Files	31
4	Adjusting the Settings	32
4.1	Menu Items	32
5	Connecting to Other Devices	36
5.1	Connecting to the Computer	36
6	Installing the Software	37
7	SuperCar.....	38
8	Specifications.....	39

About this Guide

The content in this document is for information purpose and is subject to change without prior notice. We have made every effort to ensure that this User Guide is accurate and complete.

However, no liability is assumed for any errors or omissions that may have occurred.

The manufacturer reserves the right to change the technical specifications without prior notice.

Recycling Information



Dispose of packaging: For disposal, separate packaging into different types. Cardboard and board must be disposed of as paper and foil must be recycled.



Disposal of old devices: Applicable in the European Union and other European countries with systems for the separate collection of reusable materials. Do not dispose old devices into the household waste! If the Rollei CarDVR-318 is no longer used, every consumer is legally obligated to dispose them separately from the household waste, for example, at a collection site of his community / city district. This ensures that devices are properly recycled and negative effects on the environment are avoided. Therefore electrical and electronic equipment needs to be marked with the shown symbol.



Battery

Conformity

The Manufacturer hereby declares that the CE marking was applied to the Rollei CarDVR-318 in accordance with the basic requirements and other relevant provisions of the following CE Directives:

- 2011/65/EC RoHs Directive
- 2014/30/EU EMC Directive
- 2014/35/EU LVD Directive
- 2012/19/EC WEEE Directive
- 2014/53/EU RED-Directive



The EC Declaration of Conformity can be requested from the address specified on the Warranty card.

Battery Warning

- ❖ Never dismantle, crush, or pierce the battery, or allow the battery to short-circuit. Do not expose battery being placed in high temperature environment, if battery leaks or bulges, stop continue to use.
- ❖ Always charge using the system. Risk of explosion if battery is replaced by an incorrect type.
- ❖ Keep the battery out of reach of children.
- ❖ Batteries may explode if exposed to open fire. Never dispose of batteries in a fire.
- ❖ **Never replace the battery on your own; have the dealer do it for you.**
- ❖ Disposed of used batteries observing local regulations.

Notes on Installation

1. Please measure the front windshield viewing area, make sure not to block driver's front view, install the camcorder below the rearview mirror (the central, higher right position of the front windshield). And we recommend that the sky and the land occupied by the screen 50%, fix the car holder and then adjust the camcorder so that the lane is aligned with the screen. Proper installation enables the camcorder to maximize the efficiency also can enhance the accuracy of LDWS.
2. Make sure that the lens is within the wiping range of the windscreen wiper to ensure a clear view even when it rains.
3. Do not touch the lens with your fingers. Finger grease may be left on the lens and will result in unclear videos or pictures. Clean the lens on a regular basis.
4. Do not install the camcorder on a tinted window. Doing so may damage the tint film.
5. Make sure that the installation position is not hindered by the tinted window.
6. This product is suitable for light windshield or light color heat-resistant film windows, it will affect video quality if install it on the dark windows or dark heat-resistant film windows.
7. Use the products of the attached power charger only, please do not use other brand power charger, in order to avoid equipment burn or cause the battery explosion.
8. The suction cup bracket is designed for temporary mounting and will require periodic re-installation. The adhesive bracket is designed for one time and long term installation. We recommend using the adhesive bracket if permanent installation is desired. We are NOT liable for any damages or data loss due to improper bracket mounting or suction cup bracket losing seal and dropping.

Caution

- ❖ Due to local laws and vehicles safety considerations, do not operate the camcorder while driving.
- ❖ Set up time zone, time and date accurately before you use this camcorder.
- ❖ Please use SuperCar software under the condition that Electronic Map are functioning normally.
- ❖ The firmware function in the camcorder is for reference only, drivers are advised to exercise discretion based on actual road conditions.
- ❖ The results of GPS positioning are only for reference, and should not affect the actual driving situation. The camcorder also cannot ensure the positioning accuracy.
- ❖ GPS positioning accuracy may differ depending on weather and location such as high buildings, tunnels, undergrounds, or forests. GPS satellite signals cannot pass through solid materials (except glass). Tinted window will also affect the performance of the GPS satellite reception.
- ❖ GPS reception performance on each camcorder may differ. The camcorder cannot determine the accuracy of the positioning results from different hardware.
- ❖ The values displayed in this camcorder, such as speed and position, may be inaccurate due to the influence of surrounding environment. They are for your reference only.
- ❖ This product is used only for non-commercial use, within the maximum limits permitted by applicable law. We do not take any responsibilities for the loss of use of the product.
- ❖ This camcorder gets warm when in use; this is normal.
- ❖ Improper use or operation of the product may result in damage of the product or its accessories and void the warranty.

Before you start using the product, it is assumed that you agree to the above statement.

1 Introduction

Thank you for purchasing this advanced drive recorder. This product is specifically designed for real time video recording when driving.

1.1 Features

- QHD recording videos (2560x1440P@30fps)
- 2.31" TFT-LCD color screen
- Wide angle lens
- Collision Detection, when a collision is detected, the camcorder will automatically trigger the emergency recording
- Parking Mode, the system will automatically power on and start recording when the camcorder senses the vibration
- Multifunction traffic safety reminder
- Support SDHC class 10 and micro SD memory storage 16GB or above (support up to 32GB)

1.2 Package Contents

The package contains the following items. In case there is any missing or damaged item, contact your dealer immediately.

Drive Recorder



Bracket



CD-ROM



Quick Start Guide



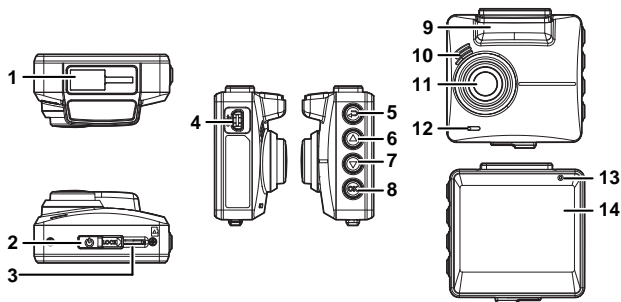
Car Adapter



Note:

We recommend using the adhesive bracket if permanent installation is desired. Do NOT install the bracket in a location that may obstruct your field of view and impact driving safety.

1.3 Product Overview



No.	Item
1	Bracket Socket
2	Power Switch
3	Memory Card Slot
4	USB / Power Connector
5	Back Button (⏪)
6	Up Button (△)
7	Down Button (▽)

No.	Item
8	Enter Button (⏩)
9	GPS Antenna
10	Speaker
11	Wide Angle Lens
12	Microphone
13	LED Indicator
14	LCD Panel

Note:

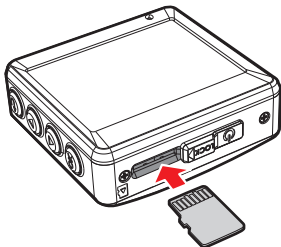
Please press the button (5~8) according to the diagram notice shown on screen.

2 Getting Started

2.1 Storage Media

2.1.1 Insert the Memory Card

Insert memory card with the pins and the screen of the device facing forward, see the picture as below. Push the memory card in until a click sound is heard, indicating the card is in position.



2.1.2 Remove the Memory Card

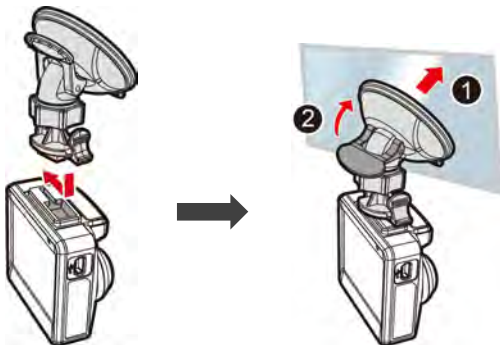
If the camcorder is power on, please power off first and wait for the procedure of switching off the camcorder completed before removing the memory card.

Note:

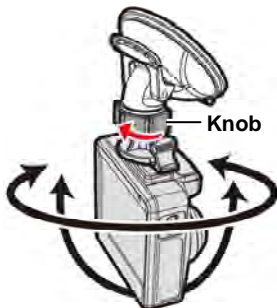
1. Do not remove or insert the memory card when the camcorder is turned on. This may damage the memory card.
2. Support SDHC class 10 and memory storage 16GB or above (support up to 32GB).
3. Please format the micro SD cards before the initial use. The formatted file type for this camcorder is FAT32 file.
4. When removing the memory card, be careful that the card may spring out and get lost. The memory slot has this spring-out feature for easy removal of the card.

2.2 Installing in Vehicles

2.2.1 Mount the Camcorder to Windshield



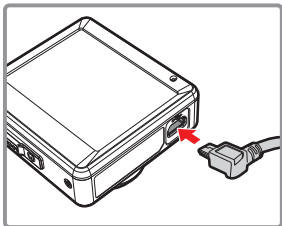
2.2.2 Adjust the Camcorder



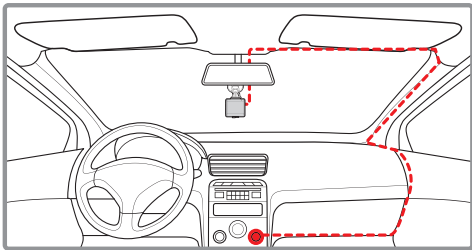
2.3 Connecting to Power

Use only the attached power connector for activating the camcorder and charging the built-in battery.

1. Connect one end of power connector to power connector port on the camcorder. USB port input: DC 5V / 1.0A.









2. Plug the other end of the car adapter to the cigarette lighter socket of your vehicle. Once the vehicle engine is started, the camcorder automatically turns on. Car charger input: DC 12 / 24V.



Note:

Please measure front windshield viewing area, so as not to block the driver's field of view, and install the device under the driving mirror (upper central of the front windshield). And we recommend that the sky and the land occupied by 50% in the recording screen, please adjust the device so that the alignment icon is aligning the driving lane. Proper installation enables the device to maximize the efficiency and improve the accuracy of LDWS.

Battery Status Indicator:

Icon	Description
	Full battery power.
	2/3 battery power.
	1/3 battery power.
	Out of battery power.
	Battery is charging.
	Connect the car adapter to charge the battery, battery is fully charged.

Note:

1. Use the products of the attached power charger only, please do not use other brand power charger, in order to avoid equipment burn or cause the battery explosion.
2. Please take note if the environment temperature reaches 45°C or above, the car adapter can still supply power to camcorder, but it will not charge the Lithium-ion battery. This is the characteristic of Li-polymer and is not a malfunction.

Low Voltage:



Note:

If the camcorder is connected to the car adapter and turned on, and the screen displays a charging reminder symbol such as the image above, it means that the available voltage is too low. Please wait for a few minutes until the charging reminder symbol disappears before entering the video recording mode to prevent invalid recording or file damage.

2.4 LED Indicator

Status Explanation	LED Indicator Color
Power off, battery charging	Red
Power off, battery full charged	LED light off
Power on, battery charging	Red
Power on, battery full charged	Green
Standby / Standby and screen off	Green
Recording/ Recording and screen off	Flash red

2.5 Powering the Camcorder On / Off

2.5.1 Auto Power On/Off

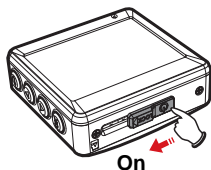
If the camcorder is connected to the vehicle power supply, once start the car engine, the camcorder will automatically power on and start recording.

Once the vehicle engine shuts down, the camcorder automatically saves the recording and turns off the power within 10 seconds.

2.5.2 Manual Power On/Off and Reset

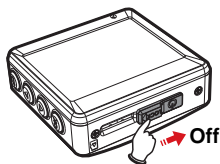
2.5.2.1 Manual Power On

Slide the **power switch** up and make sure that the power switch locks on the memory card slot.



2.5.2.2 Manual Power Off

Slide the **power switch** down and make sure that the memory slot is released and the camcorder starts power off sequence. Do not power on the camcorder when it is in the power-off sequence, or the recorded file may become corrupt.




2.5.2.3 Reset the Camcorder

In case the camcorder fails to function normally due to unknown causes, slide the **power switch** down and verify the memory card is in the removable state; wait for 10 seconds and slide the power switch up again to restart the camcorder.

2.6 Initial Settings



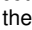

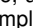
Before using the camcorder, we recommend you setup the correct **Time zone, Date and Time.**

Note:


Please note that if you press the  button during recording, the system will stop recording and enter OSD menu. Make sure the recording is already stopped then continue operating the menu.

2.6.1 Set Time Zone

To set the time zone, do the following:

1. Press the  button to enter the OSD menu.
2. Press the  button to select **Set Time Zone**, and then press the  button for entering function menu.
3. Press the  button to set the current time zone, and then press the  button to complete setting.



4. Press the  button to return to recording screen.

Greenwich Mean Time (GMT) map of time zones:








Note:


1. If **Satellite Synchronization** is on, camcorder clock will be calibrated via satellite clock signal based on **Set Time Zone**. Please refer to **Set Time Zone** (4.1).
2. If satellite positioning is not successful, camcorder clock will run based on user defined time.

2.6.2 Set the Date / Time

To set the correct date and time, do the following:

1. Press the  button to enter the OSD menu.
2. Press the  button to select **Date / Time**, and then press the  button for entering function menu.
3. Press the  button to adjust the value, and then press the  button to set the next field.
4. Repeat step 3 until the date and time setting is completed.



5. Press the  button to return recording screen.

Note:

To ensure the accuracy of the video file time, please reset the date and time when the battery power runs out or when not in use over 7 days.

3 Using the Drive Recorder

3.1 Automatic Record

If the camcorder is connected to the vehicle power supply and slide the power switch, once start the car engine, the camcorder will automatically power on and start recording.

Recording will automatically stop when the engine is switched off.

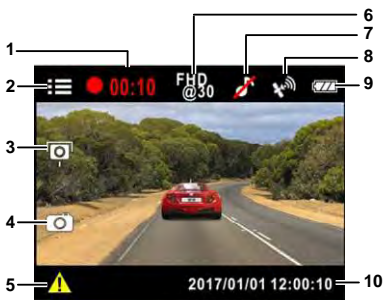
Note:

1. Some vehicle power supply would not turn on / off automatically with the car engine start, if the camcorder cannot automatically power on/off with the car engine, please manually connect the power supply with the vehicle power, and then power on, or manually power off the camcorder and then release the connector with the car power supply.
2. It can be configured to save a video file for every 1 or 3 minutes of recording.
3. All the videos and photos are saved in the memory card, if memory card is full, loop recording will be generally overwrite the oldest video file.





3.1.1 Resolution

QHD@30 (1440P 30fps) / FHD@60 (1080P 60fps) / FHD HDR (1080P HDR 30fps) / FHD@30 (1080P 30fps) / HD@120 (720P 120fps).

3.1.2 The Recording Screen




No.	Icon	Item	Description
1		Recording Duration	Indicates the video current duration.
2		Menu Button	During video recording, press the button to enter the OSD menu ; long press 3 seconds button to enter Function Chart.
3		Add Speed Point Button	During video recording, press the button to add a speed cam point. Please refer to Add Speed Point (3.2).
4		PIV (Picture in Video) Button	Press to capture video screen shots from the front camera.
5		Emergency Recording Button	During video recording, press the button to enter emergency recording mode. Please refer to Emergency Recording (3.1.3).
6		Resolution icon	Indicates the video resolution.

7		Voice Record icon	Indicates voice recording sets as off, the sound will not be recorded. Please refer to Voice Record (4.1).
8		Satellite Positioning icon	Indicates the strength of satellite positioning. If the  icon shows up on screen, it indicates that the camcorder cannot complete the satellite positioning.
9		Battery Power icon	Indicates battery or camcorder charging status.
10	2017/01/01 12:00:10	Date / Time	Indicates the current recording date and time.

3.1.3 Emergency Recording

To Start the Emergency Recording, do the following:

1. During Video Recording, press the  button to enter emergency recording mode, the “**Emergency**” message will be shown immediately on the upper right corner of the screen, and the recorded file will be protected.



2. The emergency video recording length is same as the recording interval setting. When the emergency recording length reaches the setting, the system will return to the general recording mode.

Note:

1. If the **Collision Detection** function is enabled and a collision is detected, the camcorder will automatically trigger the emergency recording.
2. The emergency recording file is created as a new file, which will be protected to avoid being overwritten by normal loop recording. A memory card can save up to 20 emergency video files if record interval time is 1 minute, and save up to 10 emergency video files if record interval time is set as 3 minutes.
3. The notice message of “**Emergency files are full**” will pop up on the screen when the emergency recording folder is full, and the later emergency files will be saved in the **Normal Video** folder which will be over written if memory is full. Thus, if you want to keep newest emergency video file, please manually delete the oldest files in the emergency video folder to release more capacity.

3.2 Add Speed Point

You may customize speed cam positions in this product.


1. When the GPS positioning is completed , press \triangle to update speed camera points.
2. This product features a capacity of 200 speed cam positions. In case you are trying to add more than that the system prompts with message "**Speed Position is full**".

Note:

You may delete custom speed cam positions by selecting the *Delete Last Position* or **Delete All Position** option from the **Speed Position Management** menu. Please note that all of your existing speed cam positions are deleted once the **Delete All Position option** is selected. Make sure you are ready to recreate your custom speed cam positions before running this option.

3.3 Picture in Video

You can also use this camcorder to take snapshots of the current scene.

1. In recording status, press ∇ to capture recording screen shots from the front lens.
2. When the icon  shows in the central of screen, it means the screenshots is completed.






Note:

1. The screen shots image resolution quality is depending on the video resolution setting.
2. The definition of picture in video by this product, the picture resolution is limited by the speed of the target object and changes in ambient lighting. The photograph function is better used for taking still pictures in accident scenes or when the car is stopped to wait for a traffic light.

3.4 Parking Mode

To monitor the vehicle when it is parked, you can activate **Vibration Detection**, or **Motion and Collision Detection**.

Follow the steps below to change the settings for Parking Mode:

1. Press the  button to enter the OSD menu.
2. Press the \triangle/∇ button to select **Parking Mode**, and then press the  button for entering function menu.
3. Press the \triangle/∇ button to configure Parking Mode (Vibration Detection / Motion and Collision Detection / Off), and then press the  button to complete setting.



- **Vibration Detection:**

- If disconnected external power supply when the camcorder is powered on, the system alert message **“Wait 10 seconds to enter Vibration Detection.”** This means the system will power off and enter Vibration Detection automatically in 10 seconds.
- Once Vibration Detection Mode is triggered, when the camcorder detects any collision, it will automatically power on and start recording, the event will be recorded for 60 seconds (per file).
- In this mode, drive recorder is powered off until event happens. This mode is more power saving.


- **Motion and Collision Detection:**

- If disconnected external power supply when the camcorder is powered on, the screen will show message **“Enter parking mode after 10 sec.”** This means the unit will enter Motion and Collision Detection automatically in 10 seconds, and then LCD screen turn

off after 30 seconds (the camcorder will turn off the screen temporarily, but still in standby detection status. Press any button to turn on the operation screen).

- In the Motion and Collision Detection mode, when the camcorder detects any motion in front of lens, or when the camcorder detects collision, the automatic record will be activated.
- In this mode, when the camcorder detects collision or any motion in front of lens, the video recording will be triggered and the event will be recorded for 10 seconds (per file). If the event lasts more than 10 seconds, the camcorder will keep recording up to 2 minutes.
- In this mode, the camcorder is in standby mode until event happens. This mode will consume more battery power.

- **Off: No parking monitoring activated.**



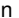


4. Press the  button to return recording screen.

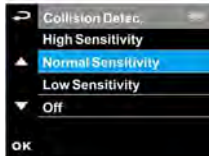
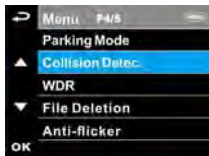
Note:


1. If battery in a fully charged condition, it can record about 30 minutes video in *Motion and Collision Detection* mode. As the camcorder is used, the battery storage capacity will decrease gradually. This is a normal phenomenon for the battery.
2. The video files taken in Parking Mode will be saved in "**Parking Mode**" folder, which will not be overwritten by normal video files. However, if the remaining memory capacity is not enough to save the last normal video file, the oldest Parking Mode video will be deleted. Please always make sure you backup Parking Mode video files.
3. Parking Mode folder can save about 40 parking mode files, when parking mode files are full, loop recording will overwrite the oldest file.

3.5 Collision Detection

If the **Collision Detection** function is enabled, this camcorder begins emergency recording once it detects any collision. Sensitivity of the Collision Detection function is set to Normal by default, if user wants to change the settings of Collision Detection, do the following:

1. Press the  button to enter the OSD menu.
2. Press the  button to select **Collision Detection**, and then press the  button for entering function menu.
3. Press the  button to change the sensitivity of this camcorder's collision detection (High Sensitivity / Normal Sensitivity / Low Sensitivity / Off), and then press the  button for entering function menu.





4. Press the  button return to recording screen.

Note:

1. The emergency recording file is created as a new file, which will be protected to avoid being overwritten by normal loop recording. If record interval time is set as 1 minute, a memory card can save up to 20 emergency video files, and save up to 10 emergency video files if record interval time is set as 3 minutes.
2. The alert message of "**Emergency files are full**" will pop up on the screen when the emergency recording folder is full, and the later emergency files will be saved in the Normal Video folder which will be over written if memory is full. Thus, if you want to keep newest emergency video file, please manually delete the oldest files in the emergency video folder to release more space.

3.6 Function Chart

When the camcorder is recording, long press  button 3 seconds will enter Function Chart in the LCD screen, users can check vehicular information here. Press  button once again will go back into your recording.





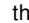


Note:

Driving Speed and Driving Direction are only applicable when satellite positioning of the camcorder is ready; otherwise, they will be displayed in gray scale only. Satellite positioning function is dependent on the model purchased.



3.7 File Playback

3.7.1 Playing Videos

Playback video record files as follows:

1. Press the  button to enter the OSD menu.
2. Press the  button to select **File Playback**, and then press the  button for entering function menu.
3. Press the  button to select **Video / Parking Mode / Emergency**, and then press the  button for entering menu.




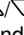



4. Press  button to browse video files, select the video file and then press  button to enter **Playback Mode**.

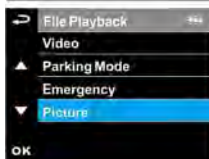




5. Press the  repetitively to return recording screen.

3.7.2 Viewing Pictures

View pictures as follows:

1. Press the  button to enter the OSD menu.
2. Press the  button to select **File Playback**, and then press the  button for entering function menu.
3. Press the  button to enter **Picture**, and then press the  button for entering menu.

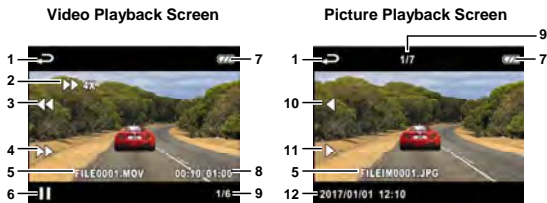


4. Press  button to browse the photo file, select the file and then press  button to enter the photo **Playback Mode**.



5. Press the  repeatedly to return recording screen.

3.7.3 Playback Screen



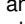




No.	Icon	Item	Description
1		Return	Press the button to return preview screen of video or picture. Press the button repetitively to return recording screen.
2		Fast Forward / Fast Rewind icon	Indicates video fast-forward and rewind status.
3		Fast Rewind / Previous File Button	When playing videos, press the button will reverse the playback. Press button to view previous file.
4		Fast Forward / Next File Button	When playing videos, press the button to fast forward playing of video. Press button to view next file.
5	FILE0001.MOV	File name	Indicates the file name of video / picture.
6		Playback/ Pause button	Press the button to play or pause the video.
7		Battery icon	Indicates Battery or charging status.
8	00:10 / 01:00	Playback Duration / Total Duration	Indicates video playback time and total duration.

No.	Icon	Item	Description
9	1/7	Serial Number	Shows the current file serial number and total file number.
10	◀	Previous File	When viewing pictures, press the ◀ button will switch over to the previous file.
11	▶	Next File	When viewing pictures, press the ▶ button will switch over to the next file.
12	2017/01/01 12:10	Date and time	Date and time of photo taking.







3.8 Deleting Files

To delete file(s), do the following:


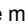
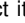

1. Press the  button to enter the OSD menu.
2. Press the  button to select **File Deletion**, and then press the  button for entering function menu.
3. Press the  button to select Video / Parking Mode / Emergency / Picture, and then press the  button for entering menu.



- **Delete One:**

- Press the  button to select **Delete One**, and then press the  button to enter the menu.
- Press  button to browse files, select the files you want to delete and then press  button to enter the menu.
- Press the  button to select item, and then press the  button to confirm or cancel the selection.

- **Delete All:**

- Press the  button to select **Delete All**, and then press the  button to enter the menu.
- Press the  button to select item, and then press the  button to confirm or cancel the selection.

4. Press the  repetitively to return recording screen.

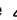

Note:

Deleted files CANNOT be recovered. Ensure the files you wish to preserve are backup before deletion.

4 Adjusting the Settings

4.1 Menu Items

Refer to the below table for details of main menu and function list.

Menu option	Description	Available option
File Playback	Select the file category that you want to view.	Video / Parking Mode / Emergency / Picture
Satellite Status	Displays the current state of the satellite reception.	
Satellite Synchronization	If the satellite time is enabled, the drive recorder clock will synchronize according to the satellite time zone you set. When you turn on this feature, it will display the satellite time preferentially, and cannot be manually changed.	On / Off
Speed Unit	The system displays the speed setting unit.	Km/h / mph
Speed Position Management	Add Speed Point: The satellite positioning will manually add speed camera location. You can add up to 200 speed camera locations to the built-in system. Delete Last Position: Delete the last speed camera point. Delete All Position: Delete all speed camera point.	Add Speed Point / Delete Last Position / Delete All Position
Set Time Zone	Set the time zone you are in.	Press the  /  button to set the satellite time. You may customize it between GMT

Menu option	Description	Available option
		-12:00 ~ GMT +14:00
Date / Time	Set the date and time.	Press the Δ/∇ button to adjust the value, and then press the OK button to set the next field, and complete setting
Language	Language setting.	English/Español/ Deutsch/ Italiano/ Français/ Nederlands
Time Stamp	If the time stamp is enabled, recording files or photos will show the date and time.	On / Off
Resolution	Setting of video resolution.	QHD@30 (1440P 30fps) / FHD@60 (1080P 60fps) / FHD HDR (1080P HDR 30fps) / FHD@30 (1080P 30fps) / HD@120 (720P 120fps)
EV	Setting of exposure value.	Press the Δ/∇ button to set the exposure value. It can be set between -2 ~ +2
LCD Setting	Set LCD off time. Camcorder screen will be off after a set time if no operation is detected during the standby or record mode. Press any button will switch it on. (Recording is not affected when screen is off).	On / Off After 30 sec. / Off After 3 min. / Off
Voice Record	Setting for activating audio in the video.	On / Off

Menu option	Description	Available option
Volume	Adjust the sound volume.	Press the \triangle/∇ button to set the volume. It can be set between 1 ~ 10.
Record Interval	Save respective video files in a length of the selected duration.	1 min. / 3 min.
Parking Mode	<p>Vibration Detection: If Vibration Detection is enabled, please disconnect the external power supply camcorder in power on status, it will automatically power off and enter the detection mode after 10 seconds. The camcorder will automatically power on and start recording when the camcorder detects vibration.</p> <p>Motion and Collision Detection: If Motion and Collision Detection is enabled, please disconnect the external power supply camcorder in power on status, it will automatically power off and enter the detection mode after 10 seconds. The camcorder will automatically power on and start recording when the camcorder detects motion and collision.</p> <p>Off: No parking monitoring activated.</p>	Vibration Detection / Motion and Collision Detection / Off
Collision Detec.	If Collision Detection is activated, this camcorder starts emergency recording once it detects any collision.	High Sensitivity / Normal Sensitivity / Low Sensitivity / Off
WDR	Present a crisp and clear picture quality with harmonious contrast in a high contrast, high discrepancy environment.	On / Off

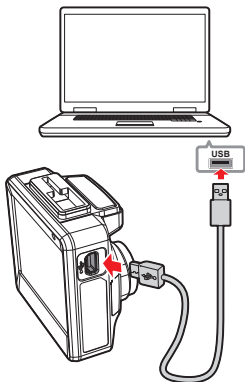
Menu option	Description	Available option
File Deletion	Delete the file(s).	Video / Parking Mode / Emergency / Picture
Anti-flicker	Domestic power supply varies by area. It is recommended that you should check the "Table of voltage and frequency of different countries" for the correct setting.	60Hz / 50Hz
Format	Format the memory card inserted in the equipment. All the files in the card will be erased.	Yes / No
Default	The system reverts to the default setting.	Yes / No
Firmware Version	Indicates the current firmware version.	

5 Connecting to Other Devices

5.1 Connecting to the Computer

You can connect the camcorder to a desktop computer or notebook to transfer or view files.

1. Connect mini USB cable to the camcorder mini USB port.
2. Connect the other end of USB cable to an available USB port of your computer.



3. Power on the camcorder, the computer screen will show up the message when the computer detects your camcorder, select "Open folder to view files", or open the "Removable Disk", then users can save the files to your computer.

Note:

This only indicates the camcorder can connect to the computer; mini USB cable is not included in standard package.

6 Installing the Software

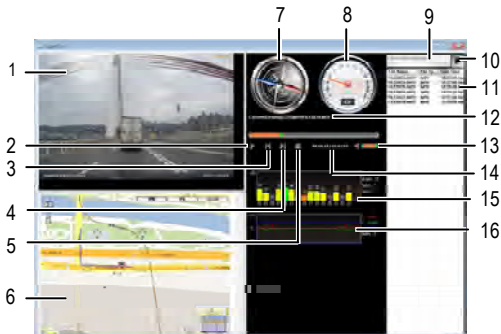
1. Place the attached CD ROM into the CD player.
2. If the CD does not execute automatically, please use Windows File Manager to execute the Install_CD.exe file in the CD.

The following screen will be shown up.



3. Press the [Menu] item to start the installation process according to the instructions on-screen.

7 SuperCar



No.	Item
1	Video Player
2	Play / Pause
3	Previous
4	Next
5	Stop
6	Google Map
7	Compass
8	Speed Meter

No.	Item
9	File Path
10	Browser File
11	File List
12	File Name
13	Volume
14	Current Duration / Total Duration
15	Signal Noise Ratio (SNR)
16	G-Sensor

Note:

1. To display the route on Electronic Map, please make sure the internet is connected before starting the video playback.
2. Video files (MOV) and GPS/G-Sensor files (NMEA) must be stored in the same folder before starting the playback.
3. The SuperCar software is only applicable to Windows operating system.

8 Specifications

Item	Description
Image Sensor	1/3" CMOS sensor
Effective Pixels	2688 (H) x 1520 (V)
Storage Media	Support SDHC class 10 and 16GB micro SD card (up to 32GB)
LCD Display	2.31" TFT LCD color screen
Lens	Wide Angle Fixed Focus lens F1.8, f=2.94mm
Focus Range	1.5m~Infinity
Satellite System	GPS
Movie Clip	Resolution: QHD@30 (1440P 30fps) / FHD@60 (1080P 60fps) / FHD HDR (1080P HDR 30fps) / FHD@30 (1080P 30fps) / HD@120 (720P 120fps) Format: MOV
Still Image	Resolution: Max. 4M (2560 x 1440) Format: JPEG
Shutter	Electronic shutter Auto: 1/33, 120 ~1/30 sec
G-Sensor	3-Axis G-Force sensor
ISO	Auto
White Balance	Auto
Microphone	Yes
Speaker	Yes

Item	Description
Interface	Mini USB
Battery	Built-in 470mAh Li-polymer rechargeable
Operating Temperature	0° ~ 60° C
Operating Humidity	20 ~ 70% RH
Storage Temperature	-20° ~ 70° C
Dimensions	56.5 x 30 x 58 mm
Weight	Approx. 74g (without memory card)

Copyright © 2017

All rights reserved.

All other marks, products or company names mentioned in this guide are trademarks of their respective companies.



Distribution:

Rollei GmbH & Co. KG
In de Tarpen 42
D-22848 Norderstedt

Service Hotline:

+49 40 270750270

Return Service:

Rollei Service Germany
Denisstraße 28a
67663 Kaiserslautern

www.rollei.de/social
www.rollei.com/social