

SI 360 Grad Kamera

SI 360 Degree Camera



Anleitung für Livestream

Live Streaming Operation

For English | German | French
Spanish | Italian | Portuguese
Greek | Dutch | Czech | Slovak
Hungarian | Swedish | Finnish
Norwegian | Danish

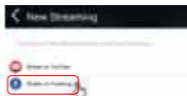


Contents

German (GE).....	1
English (EN).....	6
French (FR).....	11
Spanish (ES).....	16
Italian (IT).....	21
Portuguese (PT).....	26
Greek (GR).....	31
Dutch (DU).....	36
Czech (CZ).....	41
Slovak (SK).....	46
Hungarian (HU).....	51
Swedish (SV).....	56
Finnish (FI).....	61
Norwegian (NO).....	66
Danish (DN).....	71

Rollei S I 360 Grad Camera quick start guide for Facebook Live streaming setting

1. Install Rollei S I 360 APP on the mobile device.
2. Connect the mobile device to an available WiFi or 4G hotspot.
3. Open the Rollei S I 360 App, accept the request to connect to the before selected network with "OK" and tap the broadcast icon on the upper left corner. Select "Stream on Facebook".
4. Input a title and turn on "360 video" button, then tap 'Start Broadcast'



5. Check the post to Facebook, choose OK to complete the setup. Press cancel when asked to reconnect to your WiFi. The app will start the connection to the camera now.



Camera Settings

1. Power on the camera and switch on camera's WiFi.
2. Connect your mobile device to the camera WiFi (SSID "Rollei S I 360_XXXXXXXXXXXX"). Open the APP again and confirm to connect the camera's WiFi.

Tap on the broadcast icon on the front page. Select "Use the last setting" or "restart broadcast" and input the credentials of the WiFi or 4G hotspot for the broadcast. The camera will use this WiFi or 4G hotspot for broadcasting automatically, while turning its own WiFi off. Click "OK" or "Confirm".



For iOS device



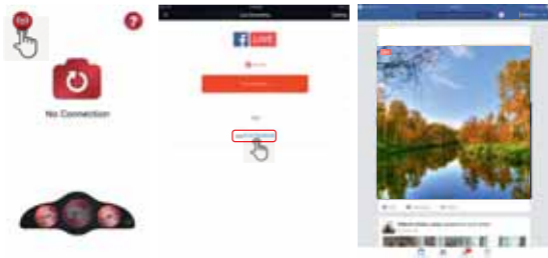
For Android device



OR
→



3. The mobile device will reconnect to an available WiFi. If this is not the case, connect manually to a network source and open the APP again. Tap the broadcast icon. When the 'On Air' line turns red and blinks, you are live! To stop, press the "Stop Broadcast" button. To restart, click "Setting" on the upper right corner and delete the last broadcast.

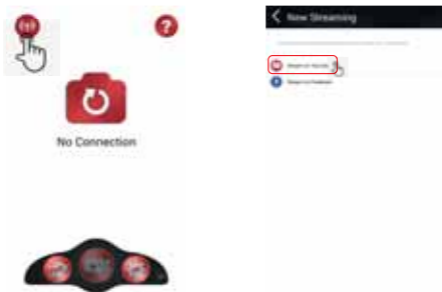


Note:

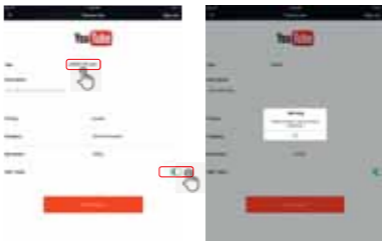
When the live streaming is finished, please STOP broadcast on the APP and then power off the camera to reset the camera.

Rollei S I 360 Grad Camera quick start guide for YouTube Live streaming setting

- 1.Install the Rollei S I 360 APP on your mobile device.
- 2.Connect the mobile device to an available WiFi or 4G hotspot.
- 3.Open the Rollei S I 360 App, tap the “New Streaming”.
button on the upper left corner, select “Stream on YouTube”.
- 4.Input a title and turn on 360 video button, then tap 'Start Broadcast'.



5. Choose OK to complete the setup. Press cancel when asked to reconnect to your WiFi.



Camera Settings

1. Power on the camera and switch on camera's WiFi
2. Connect your mobile device to the camera's WiFi (SSID "Rollei S I 360_XXXXXXXXXX"). Open the APP again and confirm to connect the camera's WiFi.

Tap on the broadcast icon on the front page. Select "Use the last setting" or "restart broadcast" and input the credentials of the WiFi or 4G hotspot for the broadcast. The camera will use this WiFi or 4G hotspot for broadcasting automatically, while turning its own WiFi off. Click "OK" or "Confirm".



For iOS device

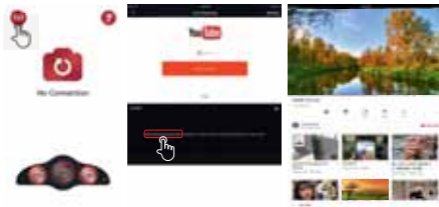


For Android device

OR



3.The mobile device will reconnect to an available WiFi. If this is not the case, connect manually to a network service and open the APP again. Tap the broadcast icon. When the 'On Air' line turns red and blinks, you are live!



Note:

When the live streaming is finished, please STOP broadcast on the APP and then power off the camera to reset the camera.